

APPENDIX - TABLE OF CONTENTS

STANDARD DETAIL DRAWINGS

JACKSON COUNTY UTILITY AUTHORITY
WATER AND SEWER STANDARD SPECIFICATIONS

General Drawings

Typical Trench Detail for Utility Line	G-1
Typical Trench Bedding and Backfill Installation Details	G-2
Typical Trench Repair and Backfill and Bedding Installation Details	G-3
Typical Trench Repair Details	G-4
Trench Width Table	G-5
Separation Requirements for Water and Sewer Lines	G-6
Typical Detail for Water and Sewer Lines Crossing	G-7
Typical Thrust Block Details for Pressure Pipe	G-8
Typical Restraining Length Chart for Pressure Pipe	G-9
Typical Restraining Length Details for Pressure Pipe	G-10
Typical Bore Cross Section	G-11
Typical Bore Profile Section	G-12

Pressure Sewer Drawings

Pump Station General Notes	PS-1
Standard Duplex Pump Station Plan View	PS-2
Standard Duplex Pump Station Section View	PS-3
Control Panel Details	PS-4
Electrical Diagram for Duplex Pump Station	PS-5
Above-Ground Valve Package Pump Station, Valves and Controls (Alt.)	PS-6
Simplex Grinder Pump Station	PS-7
Pressure Sewer Service Connection Detail	PS-8
Miscellaneous Pressure Sewer Details and STEP Tank Notes	PS-9
STEP Tank Detail for De-Centralized Sanitary Sewer System	PS-10
Typical Combination Sewage Air Valve Installation with Vault	PS-11
Typical Combination Sewage Air Valve Section A-A	PS-12

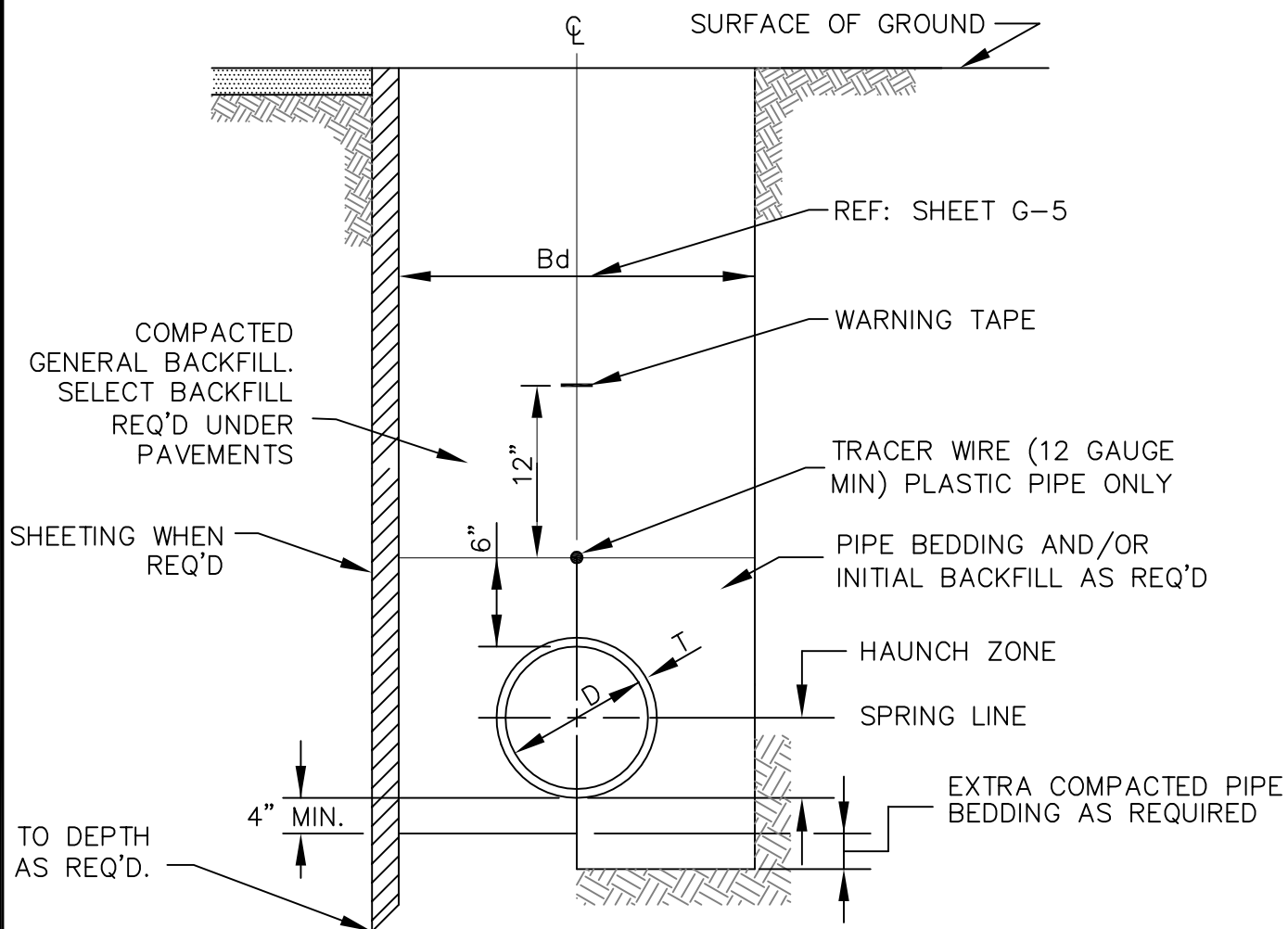
Gravity Sewer Drawings

Section Single Wye Service	SS-1
Plan Sewer Service Detail	SS-2
Sewer Cleanout Detail	SS-3
Terminal Cleanout Detail	SS-4
Service Connection for Deep Sewer, Slopes Greater Than 25 Percent	SS-5
Sewer Manhole Frame and Cover	SS-6
Sewer Manhole Plan View	SS-7
Manhole Invert Plan View	SS-8
Section A-A of 4' or 5' Diameter Manhole	SS-9
Section B-B of 4' or 5' Diameter Manhole	SS-10
6', 7', 8' or 9' Diameter Standard Manhole Detail	SS-11
Typical Drop Inlet Connection at Manhole	SS-12
Typical Detail of Sewer Pipe Connection to Existing Manhole	SS-13
Force Main Connection to Manhole	SS-14

Miscellaneous Manhole Details	SS-15
Manhole Step Detail	SS-16
Typical Detail of Concrete Encasement and/or Collar	SS-17
Detail of Pipe Plug	SS-18

Water Drawings

Typical Gate Valve Detail	PW-1
Air Release Corporation Stop Detail	PW-2
Typical Fire Hydrant Assembly (Elevation)	PW-3
Typical Fire Hydrant Assembly (Plan and Notes)	PW-4
Typical Water Meter Detail	PW-5
Typical Blow-Off Assembly	PW-6
Typical Water Service Connection to Water Main	PW-7
Typical Line Stop Detail	PW-8
Line Stop Completion Plug Detail	PW-9
Typical Detail of Concrete Encasement	PW-10



TYPICAL TRENCH DETAIL FOR UTILITY LINE

N.T.S.

NOTE:

1. CONTRACTOR TO DETERMINE REQUIREMENTS FOR SHEETING AND FOR SLOPING WALL OF TRENCH BASED ON SOIL CONDITIONS.
2. ENGINEER OF RECORD TO DETERMINE BEDDING AND BACKFILL INSTALLATION BASED ON SOIL CONDITIONS AND PIPE MATERIAL. (SEE DETAILS DWG. G2 AND G3 FOR INSTALLATION CLASSES)
3. TRENCH REPAIRS THROUGH EXISTING PAVEMENTS NOT MADE WITHIN 24 HOURS OF TRENCH CLOSURE SHALL RECEIVE TEMPORARY REPAIR WITH CLAY GRAVEL COURSE OVERLAIN WITH 1" THICK LAYER WASHED GRAVEL, MDOT SIZE 67. TEMPORARY REPAIR SURFACES SHALL BE MAINTAINED DAILY UNTIL FINAL TRENCH REPAIRS ARE COMPLETED.



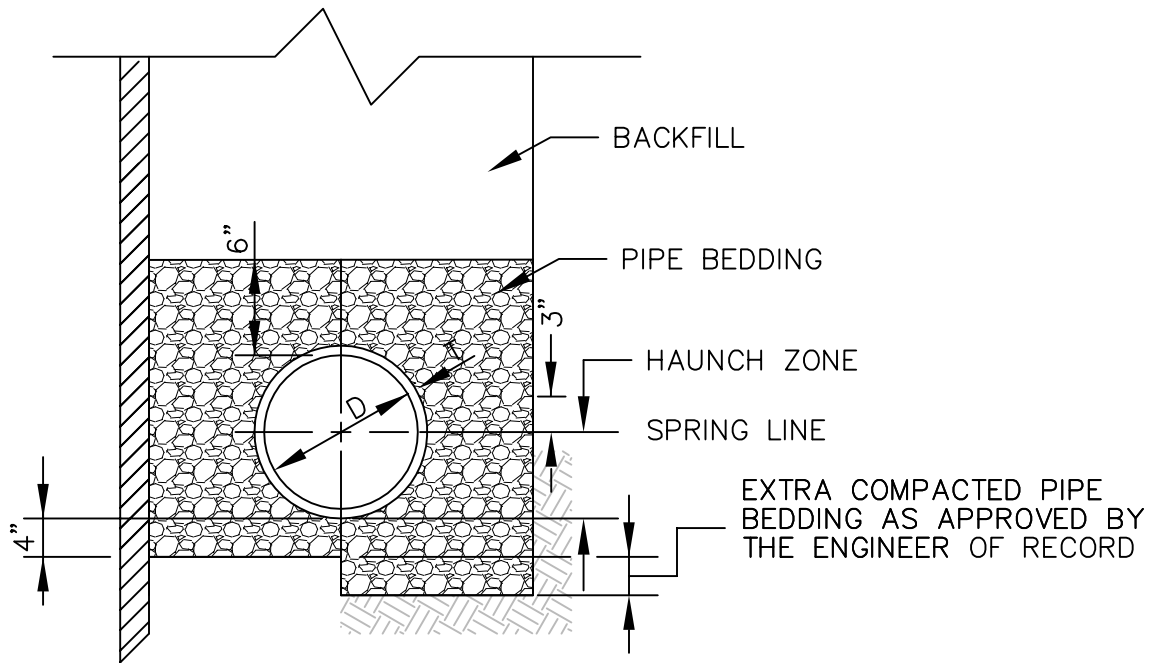
**JACKSON COUNTY
UTILITY AUTHORITY**

**JACKSON COUNTY
UTILITY AUTHORITY
CONSTRUCTION
STANDARDS**

TYPICAL TRENCH
DETAIL FOR
UTILITY LINE

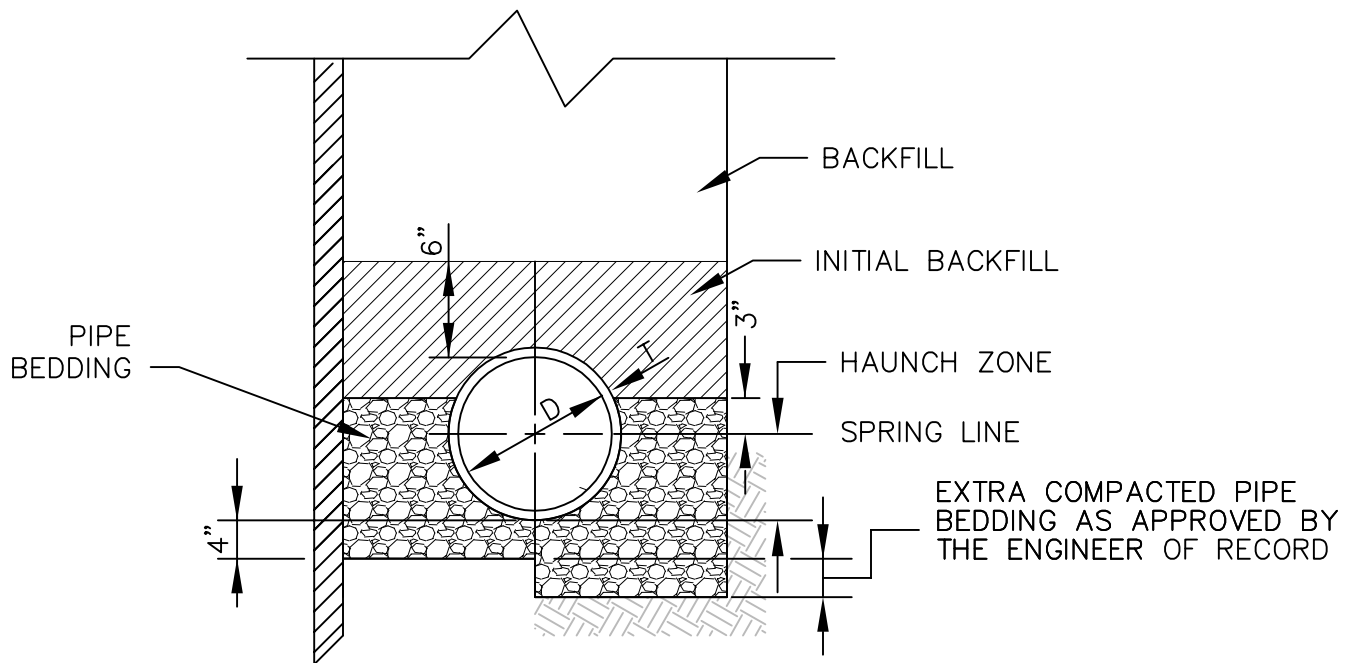
PAGE NUMBER:

G-1



CLASS "D" INSTALLATION

N.T.S.



CLASS "C" INSTALLATION

N.T.S.



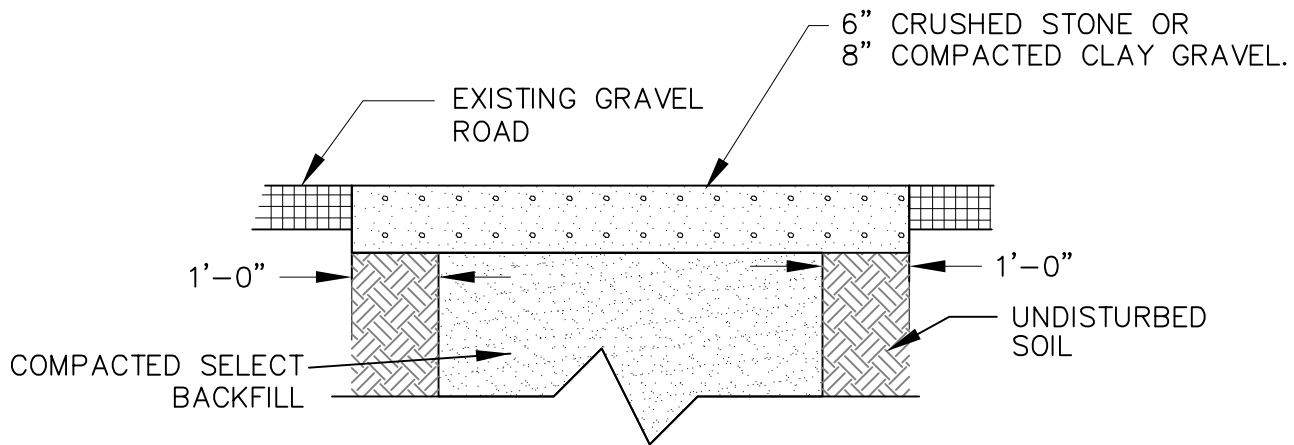
JACKSON COUNTY
UTILITY AUTHORITY

JACKSON COUNTY
UTILITY AUTHORITY
CONSTRUCTION
STANDARDS

TYPICAL TRENCH
BEDDING AND
BACKFILL
INSTALLATION
DETAILS

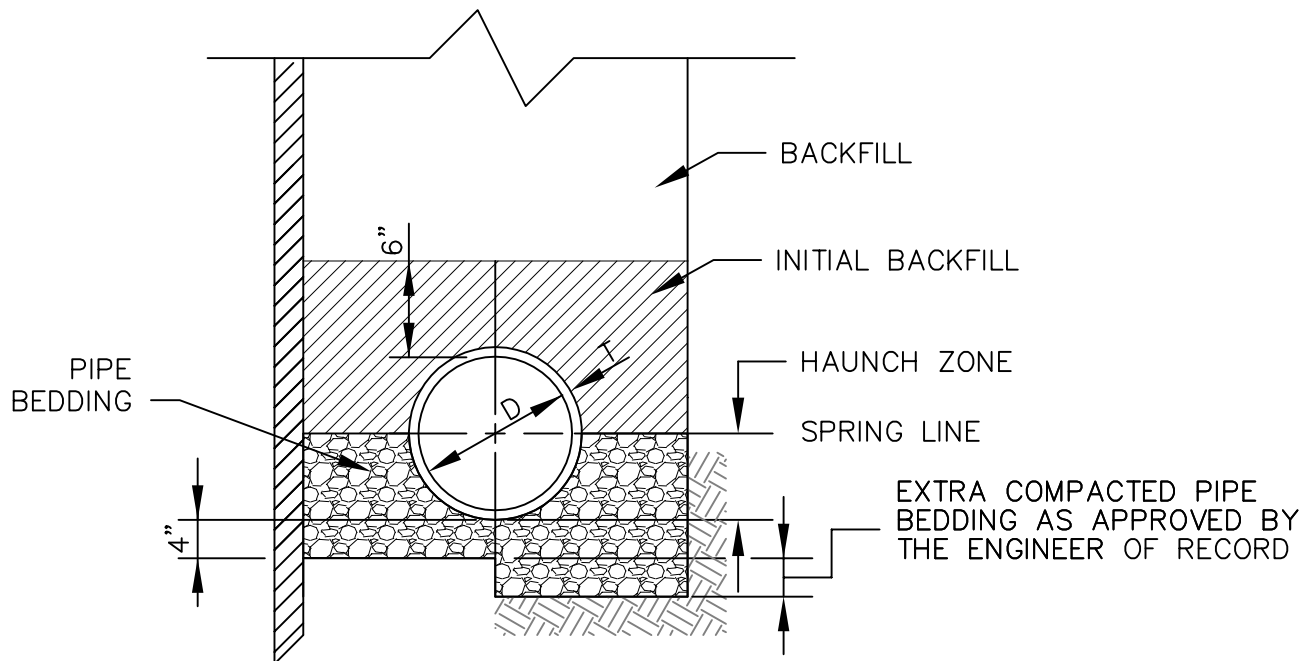
PAGE NUMBER:

G-2



TYPICAL TRENCH REPAIR IN GRAVEL ROAD/DRIVE

N.T.S.



CLASS "B" INSTALLATION

N.T.S.



**JACKSON COUNTY
UTILITY AUTHORITY**

**JACKSON COUNTY
UTILITY AUTHORITY
CONSTRUCTION
STANDARDS**

TYPICAL TRENCH
REPAIR AND
BACKFILL AND
BEDDING
INSTALLATION
DETAILS

PAGE NUMBER:

G-3



N.T.S.

-
- 4" PLANT MIX BITUMINOUS BASE COURSE
- EXISTING ASPHALT PAVEMENT
- 1'-0"
- COMPACTED SELECT BACKFILL
- UNDISTURBED SOIL
- 1'-0"
- 6" COMPACTED CRUSHED STONE

TYPICAL TRENCH REPAIR IN ASPHALT ROAD/DRIVE

GENERAL NOTE:
SAW CUT LIMITS OF ALL TRENCHES IN PAVEMENTS.



TRENCH WIDTH TABLE		
PIPE SIZE (IN.)	MAX. TRENCH WIDTH—Bd (FT.)	TRENCH VOLUME PER FOOT OF DEPTH (CY/LF)
8	3.00	0.111
10	3.50	0.130
12	3.50	0.130
15	4.00	0.148
18	4.00	0.148
24	4.50	0.167
30	5.00	0.185
36	6.00	0.222
42	6.50	0.240
48	7.00	0.259
54	7.50	0.278
60	8.00	0.296
72	9.25	0.343
78	9.75	0.361
84	10.50	0.389

NOTE:

THE TRENCH WIDTH TABLE CAN BE USED TO CALCULATE QUANTITIES FOR ITEMS OF WORK RELATED TO THE PLACEMENT OF PIPE INCLUDING SELECT BACKFILL, FILL, AND TRENCH REPAIR ITEMS.



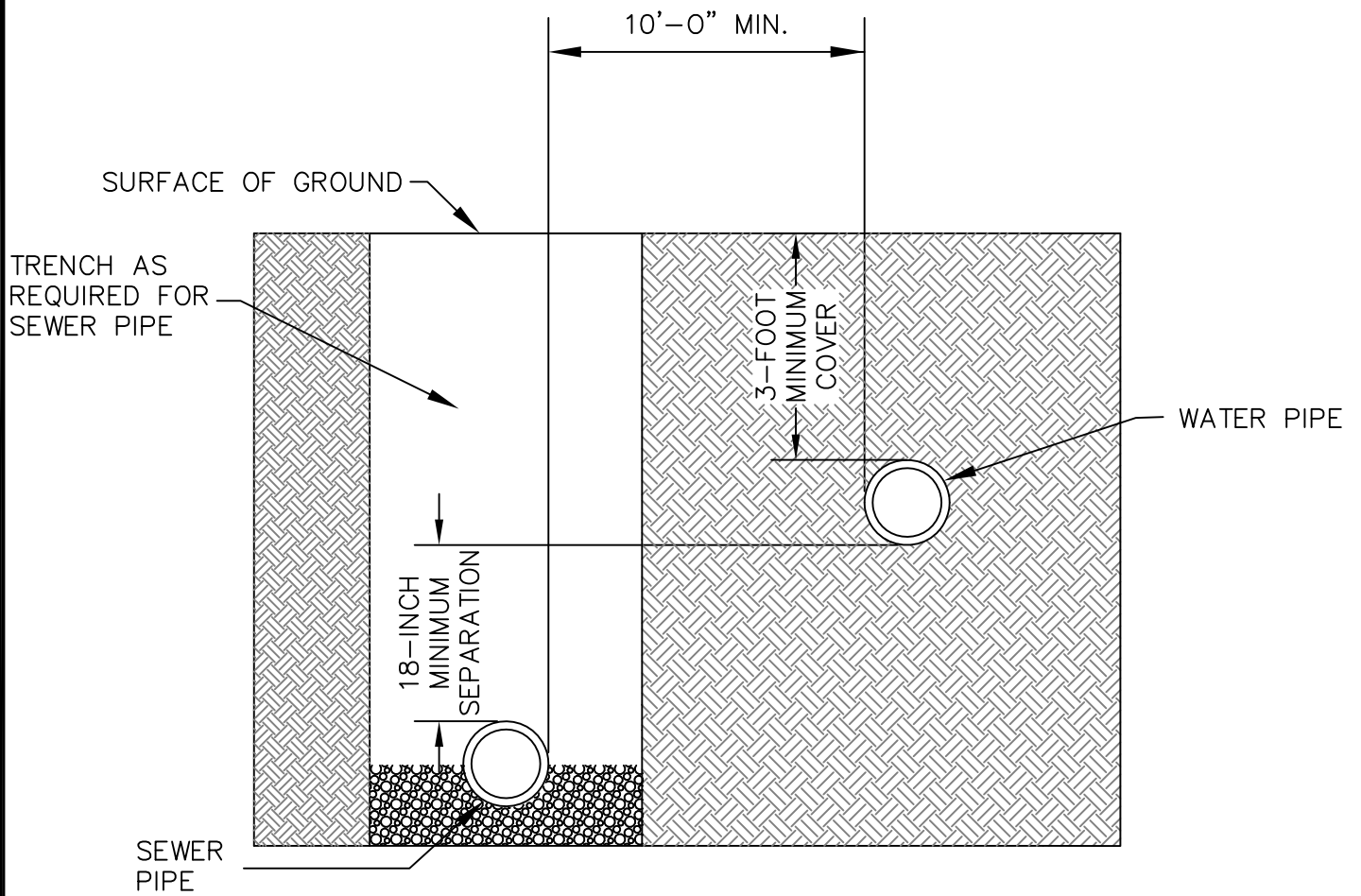
JACKSON COUNTY
UTILITY AUTHORITY

JACKSON COUNTY
UTILITY AUTHORITY
CONSTRUCTION
STANDARDS

TRENCH WIDTH
TABLE

PAGE NUMBER:

G-5



**SEPARATION REQUIREMENTS FOR WATER
AND SEWER LINES LOCATED WITHIN 10 FOOT HORIZONTAL**

N.T.S.



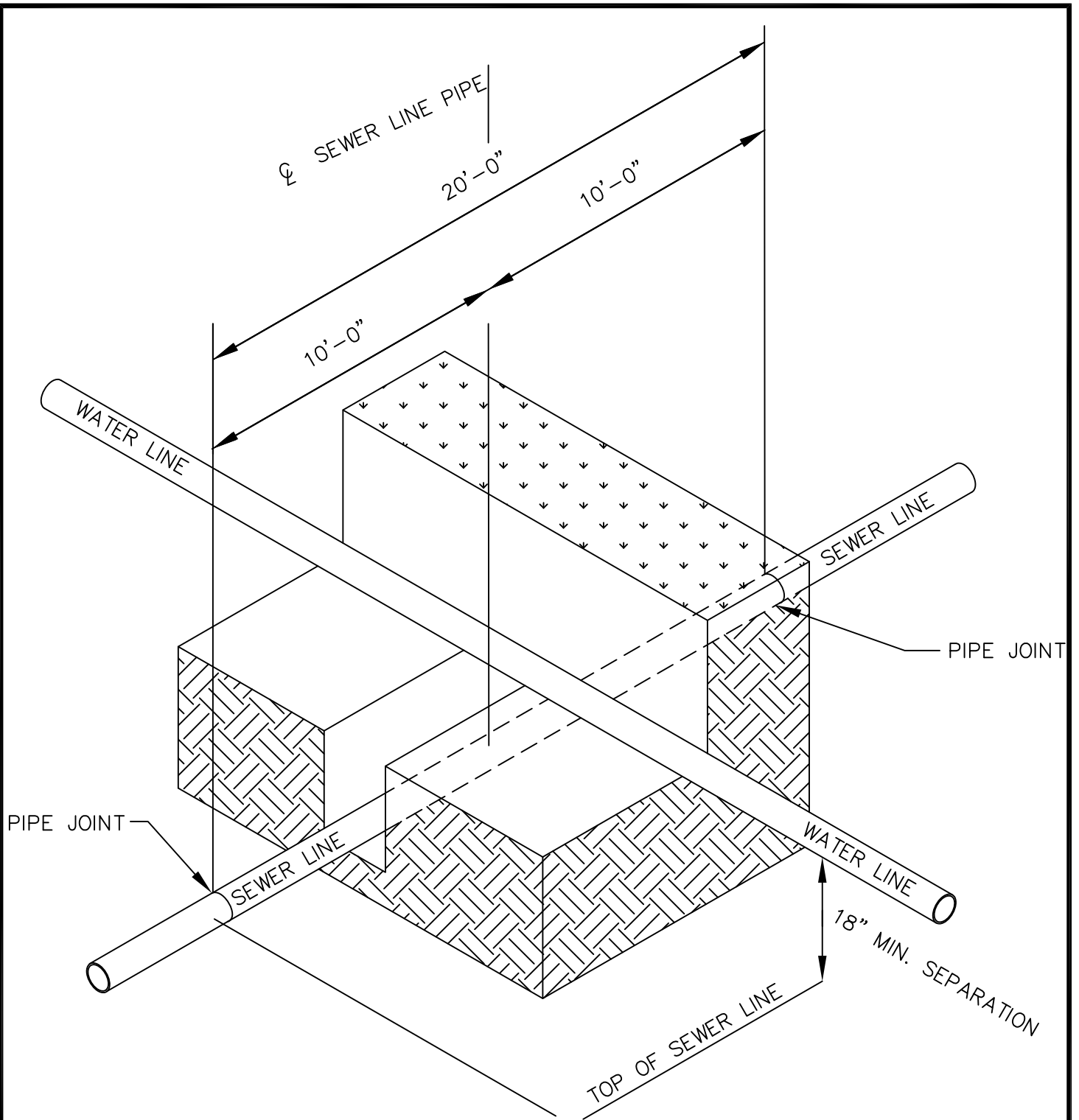
**JACKSON COUNTY
UTILITY AUTHORITY**

**JACKSON COUNTY
UTILITY AUTHORITY
CONSTRUCTION
STANDARDS**

**SEPARATION
REQUIREMENTS
FOR WATER AND
SEWER LINES**

PAGE NUMBER:

G-6



TYPICAL DETAIL FOR WATER LINE AND SEWER LINE CROSSING REQUIREMENTS

N.T.S.



JACKSON COUNTY
UTILITY AUTHORITY

JACKSON COUNTY
UTILITY AUTHORITY
CONSTRUCTION
STANDARDS

TYPICAL DETAIL FOR
WATER LINE AND
SEWER LINE
CROSSING

PAGE NUMBER:

G-7



JACKSON COUNTY
UTILITY AUTHORITY

JACKSON COUNTY
UTILITY AUTHORITY
CONSTRUCTION
STANDARDS

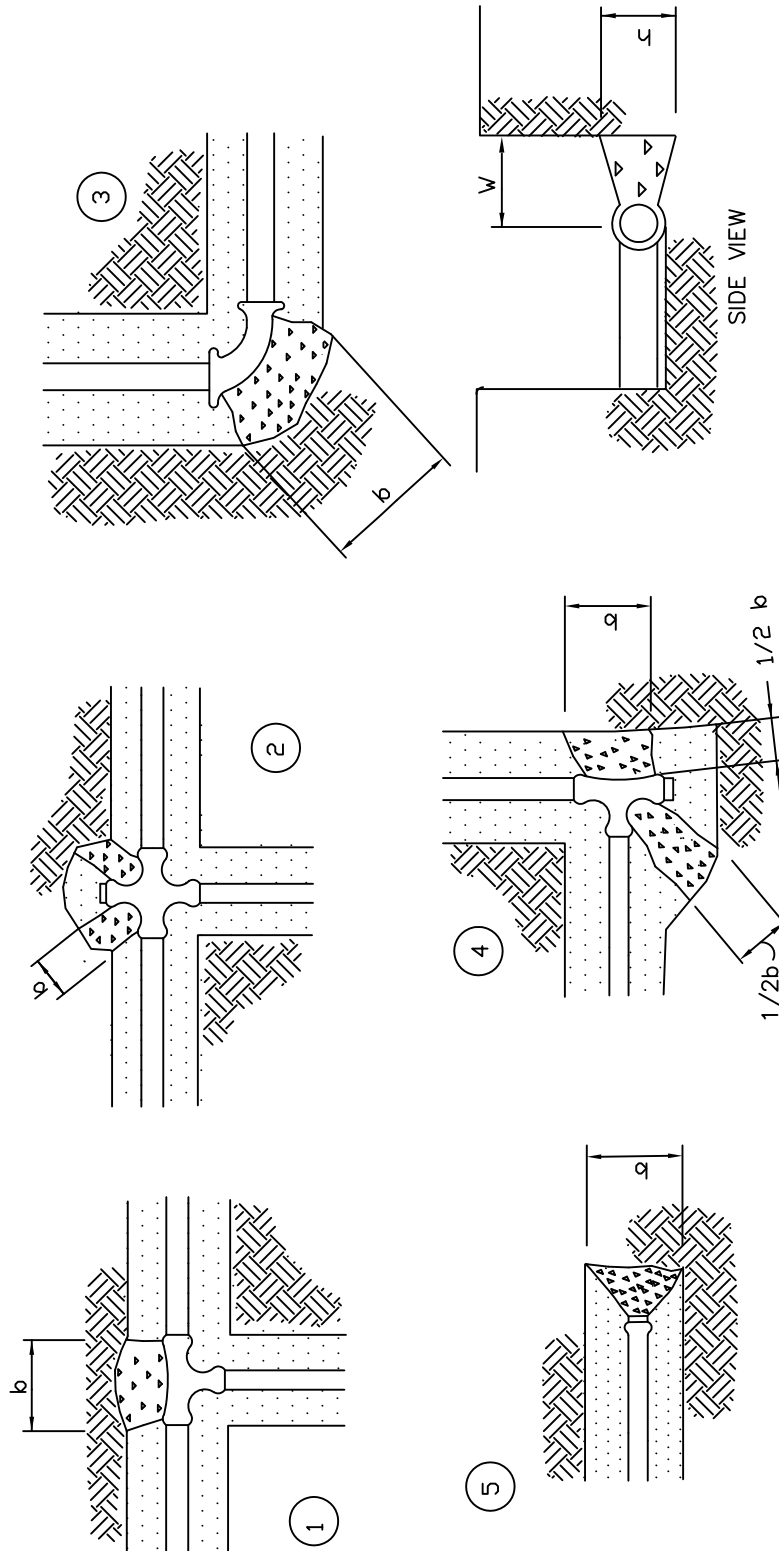
TYPICAL THRUST
BLOCK DETAILS FOR
PRESSURE PIPE

PAGE NUMBER:

G-8

THRUST BLOCKING DIMENSIONS

DIA. OF PIPE	TEE ①		CROSS ②		BENDS ③		TEE ④		DEAD END ⑤		W
	b	h	b	h	b	h	b	h	b	h	
</= 4"	1.5'	1.5'	1.5'	1.5'	1.5'	1.5'	1.5'	1.5'	1.5'	1.5'	1.5'
6"	2.0'	2.0'	2.0'	2.0'	2.0'	2.0'	2.0'	2.0'	2.0'	2.0'	1.5'
8"	3.0'	2.0'	3.0'	2.0'	4.0'	2.0'	3.0'	2.0'	3.0'	2.0'	2.0'
12"	5.0'	2.5'	5.0'	2.5'	5.0'	2.5'	5.0'	2.5'	5.0'	2.5'	2.5'



① TEE

② CROSS USED AS TEE

③ 90° BEND, 45°
BEND, 22 1/2° BEND

④ TEE USED AS ELBOW

⑤ DEAD END

NOTE:

THRUST BLOCKING DIMENSIONS BASED
ON SOIL BEARING PRESSURE OF 1500
PSF, SAFETY FACTOR OF 1.5 AND TEST
PRESSURE OF 100 PSI. IF CONDITIONS
VARY IN THE FIELD ENGINEER SHALL
MODIFY DIMENSIONS BASED ON SPECIFIC
SOIL CONDITIONS.

THRUST BLOCKING DETAILS

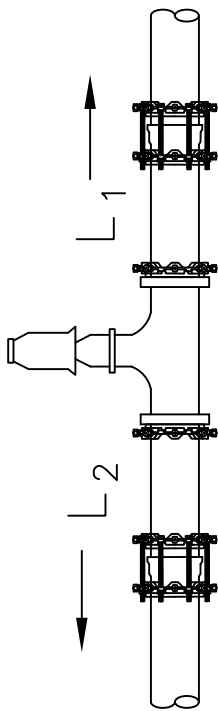
NTS



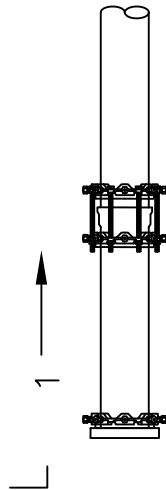
RESTRAINING LENGTHS FOR JOINT RESTRAINTS

	MAIN PIPE SIZE – 4"			MAIN PIPE SIZE – 6"			MAIN PIPE SIZE – 8"		
	L1	L2	L3	L1	L2	L3	L1	L2	L3
HORIZONTAL RESTRAINTS									
DEAD END	39'	39'		55'	55'		72'	72'	
90° ELBOW	13'	13'		18'	18'		23'	23'	
45° ELBOW	5'	5'		7'	7'		10'	10'	
22 1/2° ELBOW	4'	4'		4'	4'		5'	5'	
11 1/4° ELBOW	4'	4'		4'	4'		4'	4'	
GATE VALVE	39'	39'		55'	55'		72'	72'	
TEE 4" BRANCH	3'	3'	20'	3'	3'	11'	3'	3'	3'
6" BRANCH	3'	3'		3'	3'	35'	3'	3'	29'
8" BRANCH	3'	3'		3'	3'		3'	3'	52'
10" BRANCH	3'	3'		3'	3'		3'	3'	
VERTICAL RESTRAINTS									
45° ELBOW	4'	16'		6'	23'		7'	30'	
22 1/2° ELBOW	4'	8'		4'	11'		4'	14'	
11 1/4° ELBOW	4'	4'		4'	5'		4'	7'	

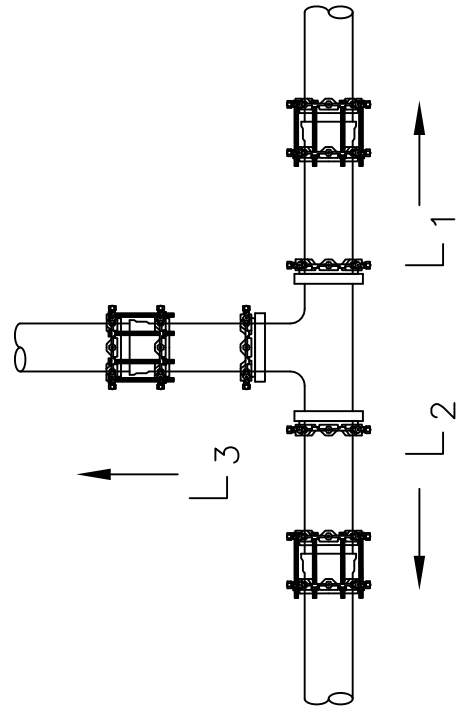
NOTE: MINIMUM RESTRAINED LENGTHS AS SHOWN ARE BASED ON THE FOLLOWING CONDITIONS – PIPE: C-900 PVC, SOIL TYPE: SILTY SAND, TEST PRESSURE: 150 PSI, SAFETY FACTOR: 1.5, DEPTH OF BURY: 3 FT, TRENCH TYPE: AS SPECIFIED IN THESE STANDARD DRAWINGS, TEE FITTING PIPE JOINT MINIMUM LENGTH: 3 FT, MINIMUM DEPTH OF LOW SIDE OF VERTICAL BEND: 4 FEET. IF THESE ARE NOT THE CONDITIONS ENCOUNTERED IN THE FIELD, CONTRACTOR SHOULD CONTACT PRODUCT REPRESENTATIVE FOR THE REQUIRED RESTRAINING LENGTHS OR FOR PIPE SIZES GREATER THAN 8 INCH NOMINAL DIAMETER.



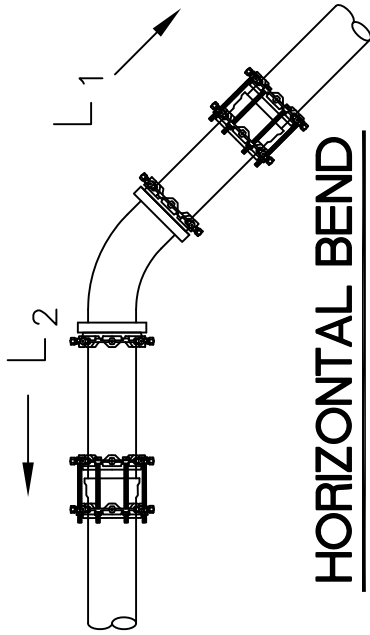
GATE VALVE



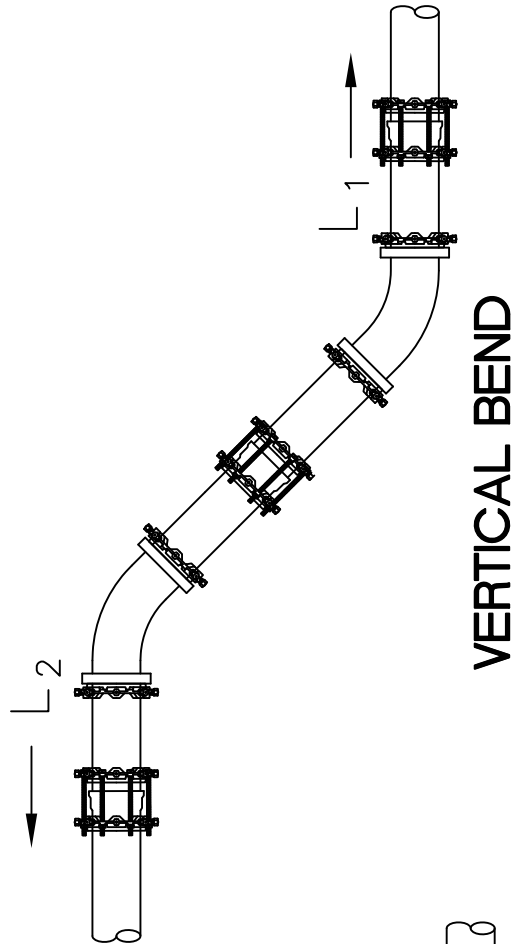
DEAD END



TEE CONNECTION



HORIZONTAL BEND



VERTICAL BEND



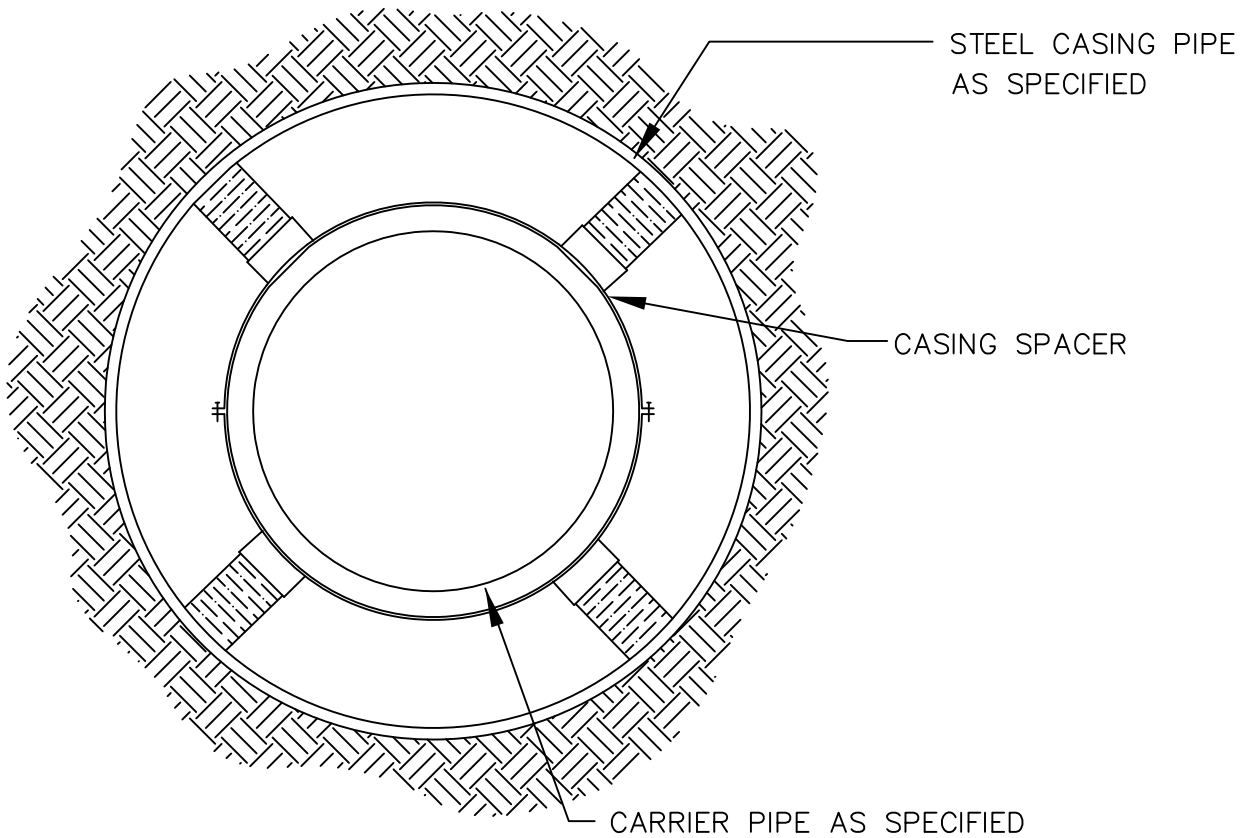
JACKSON COUNTY
UTILITY AUTHORITY

JACKSON COUNTY
UTILITY AUTHORITY
CONSTRUCTION
STANDARDS

TYPICAL RESTAINING
LENGTH DETAILS FOR
PRESSURE PIPE

PAGE NUMBER:

G-10



TYPICAL BORE CROSS SECTION

N.T.S.

CASING PIPE O.D. (inches)	MINIMUM WALL THICKNESS (inches)	
	HIGHWAYS	RAILROADS *
12 3/4 AND UNDER	0.188	0.250
16	0.250	0.281
18	0.250	0.312
20	0.250	0.344
24	0.281	0.406
30	0.312	0.469
36	0.375	0.531

* MEETS A.R.E.A. "SPECIFICATIONS FOR PIPELINE FOR CONVEYING NON-FLAMMABLE SUBSTANCES."



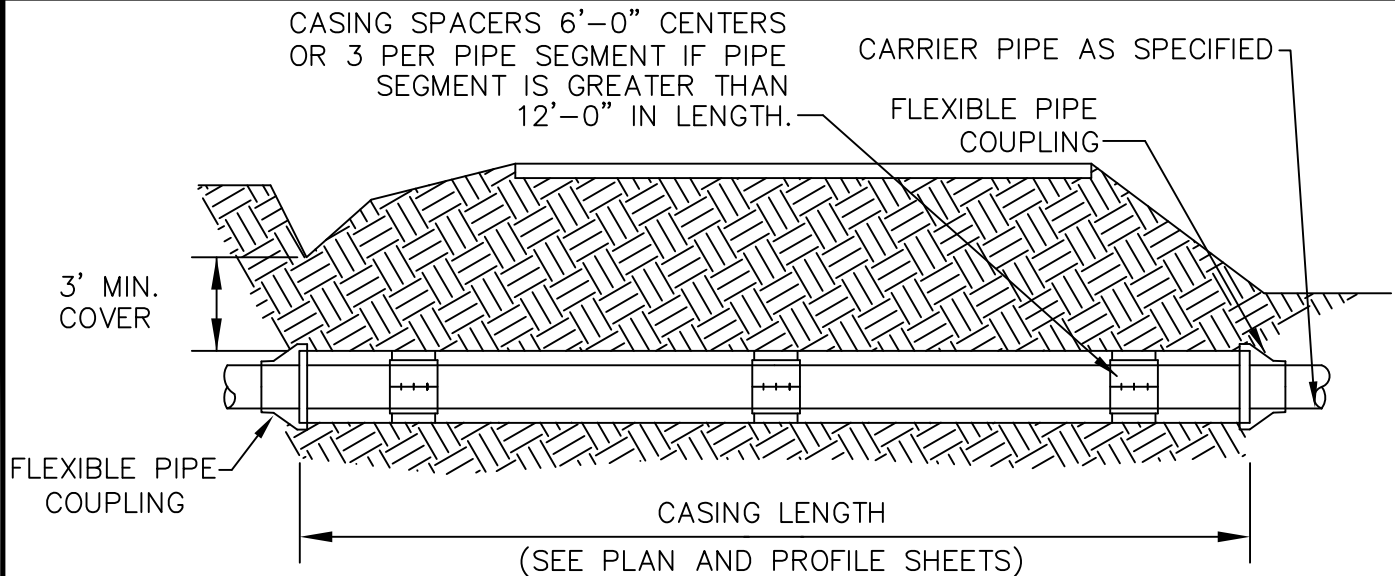
JACKSON COUNTY
UTILITY AUTHORITY

JACKSON COUNTY
UTILITY AUTHORITY
CONSTRUCTION
STANDARDS

TYPICAL BORE
CROSS SECTION

PAGE NUMBER:

G-11



TYPICAL BORE PROFILE SECTION

N.T.S.

GENERAL NOTES – BORING OR JACKING:

1. UTILITY LINE CROSSING UNDER PAVED ROADS, STATE AND U.S. HIGHWAY RIGHT-OF-WAY AND RAILROAD RIGHT-OF-WAY SHALL BE ENCASED AND PLACED BY BORING OR JACKING AS SHOWN ON PLANS. BORING OR JACKING SHALL EXTEND AS REQ'D BY THE GOVERNING AGENCY. WORK SHALL BE DONE AS SHOWN HEREIN AND REQ'D BY THE AUTHORITY.
2. ALL UTILITY LINE SHALL HAVE A MINIMUM COVER OF 36" EXCEPT WHERE LESS COVER IS INDICATED ON THE DRAWINGS. ALL TRENCH EXCAVATION WITHIN RIGHT-OF-WAY AND NOT UNDER PAVING SHALL BE BACKFILLED BY TAMPING IN 6" LAYERS. ALL SURPLUS MATERIAL SHALL BE REMOVED FROM THE RIGHT-OF-WAY AND EXCAVATION FINISHED FLUSH WITH SURROUNDING GROUND.
3. CARRIER PIPE SHALL BE AS SHOWN ON PLAN VIEW SHEETS AND AS CALLED FOR IN SPECIFICATIONS.
4. WHERE GRASS IS DISTURBED BY EXCAVATION OR BACKFILLING OPERATION, SUCH AREAS SHALL BE REPLACED BY MULCH SEEDING ON ALL SLOPES OF 5% OR LESS. ALL SLOPES OVER 5% SHALL BE REPLACED WITH BLOCK SODDING.
5. THE INSTALLATION OF SAID FACILITY SHALL BE DONE UNDER THE PURVIEW OF ALL GOVERNING AGENCIES AND THE AUTHORITY.
6. THE CONTRACTOR SHALL MAKE NECESSARY ARRANGEMENTS FOR VEHICULAR TRAFFIC AROUND SAID POINT DURING SUCH WORK AND TO PLACE BARRICADES, WARNING SIGNS, SIGNALS, LIGHTS AND IF NECESSARY, WATCHMEN FOR THE PROTECTION OF THE ROADWAY AND/OR RAILROAD TRAVEL WAY.



**JACKSON COUNTY
UTILITY AUTHORITY**

**JACKSON COUNTY
UTILITY AUTHORITY
CONSTRUCTION
STANDARDS**

TYPICAL BORE
PROFILE SECTION

PAGE NUMBER:

G-12

GENERAL NOTES

CONCRETE NOTES

1. CONCRETE SHALL BE AIR ENTRAINED AND HAVE AN ULTIMATE COMPRESSIVE STRENGTH OF 4,000 PSI AT 28 DAYS.
2. DETAILS, WORKMANSHIP AND GENERAL PROCEDURE SHALL CONFORM TO ACI 318, ACI 315, AND ACI 301 UNLESS OTHERWISE NOTED.
3. ALL REINFORCING BARS SHALL BE NEW BILLET STEEL DEFORMED BARS MEETING A.S.T.M. A-615 SPECIFICATIONS, LATEST EDITION, WITH A MINIMUM YIELD STRENGTH OF 60,000 PSI.
4. ALL REINFORCEMENT SHALL BE DETAILED, FABRICATED, AND PLACED IN ACCORDANCE WITH THE A.C.I. DETAILING MANUAL NO. SP-66, LATEST EDITION. ALL HOOKS SHALL BE STANDARD HOOKS UNLESS OTHERWISE NOTED.
5. LOCATION AND POSITION OF CONSTRUCTION JOINTS OTHER THAN THAT SHOWN ON THE DRAWINGS SHALL BE APPROVED BY THE ENGINEER PRIOR TO CONSTRUCTION.
6. THE CONTRACTOR SHALL VERIFY ALL DIMENSIONS AND CONDITIONS AT THE SITE. ALL DISCREPANCIES FOUND SHALL BE REPORTED TO THE ENGINEER BEFORE PROCEEDING WITH WORK.
7. ALL EXPOSED CONCRETE SURFACES SHALL HAVE A HAND-RUBBED FINISH.
8. ALL EXPOSED EDGES OF CONCRETE SHALL BE CHAMFERED 3/4".
9. INTERIOR OF WET WELL AND VALVE BOX SHALL BE COATED WITH 40-60 MIL. WARREN EPOXY COATING SYSTEM.

ALUMINUM HATCH NOTES

1. DESIGN LIVE LOAD FOR COVERS = 300 PSF
2. ALL COVERS TO HAVE LOCKDOWN DOORS

STRUCTURAL NOTES

1. ALL ANCHOR BOLTS SHALL BE TYPE 304 STAINLESS STEEL.
2. FABRICATOR SHALL FIELD VERIFY ALL DIMENSIONS PRIOR TO FABRICATION.

MECHANICAL NOTES

1. PUMPS, CONTROL PANELS, AND ALL ACCESSORIES PERTINENT TO PUMP INSTALLATION SHALL BE PROVIDED BY A SINGLE SUPPLIER TO INSURE CONSISTENCY.
2. STATIONS SHALL CONTAIN SUBMERSIBLE PUMPS CAPABLE OF PASSING A MINIMUM 3" DIAMETER SOLID.
3. THE DESIGN POINT FOR THE SUBMERSIBLE PUMP SHALL BE DEPEND ON CONDITIONS.
4. THE SUBMERSIBLE PUMP INSTALLED SHALL PROVIDE A FACTORY SUPPLIED GUIDE RAIL SYSTEM MEETING MANUFACTURER RECOMMENDATIONS. GUIDE RAIL SYSTEMS SHALL BE STAINLESS STEEL.



**JACKSON COUNTY
UTILITY AUTHORITY**

**JACKSON COUNTY
UTILITY AUTHORITY
CONSTRUCTION
STANDARDS**

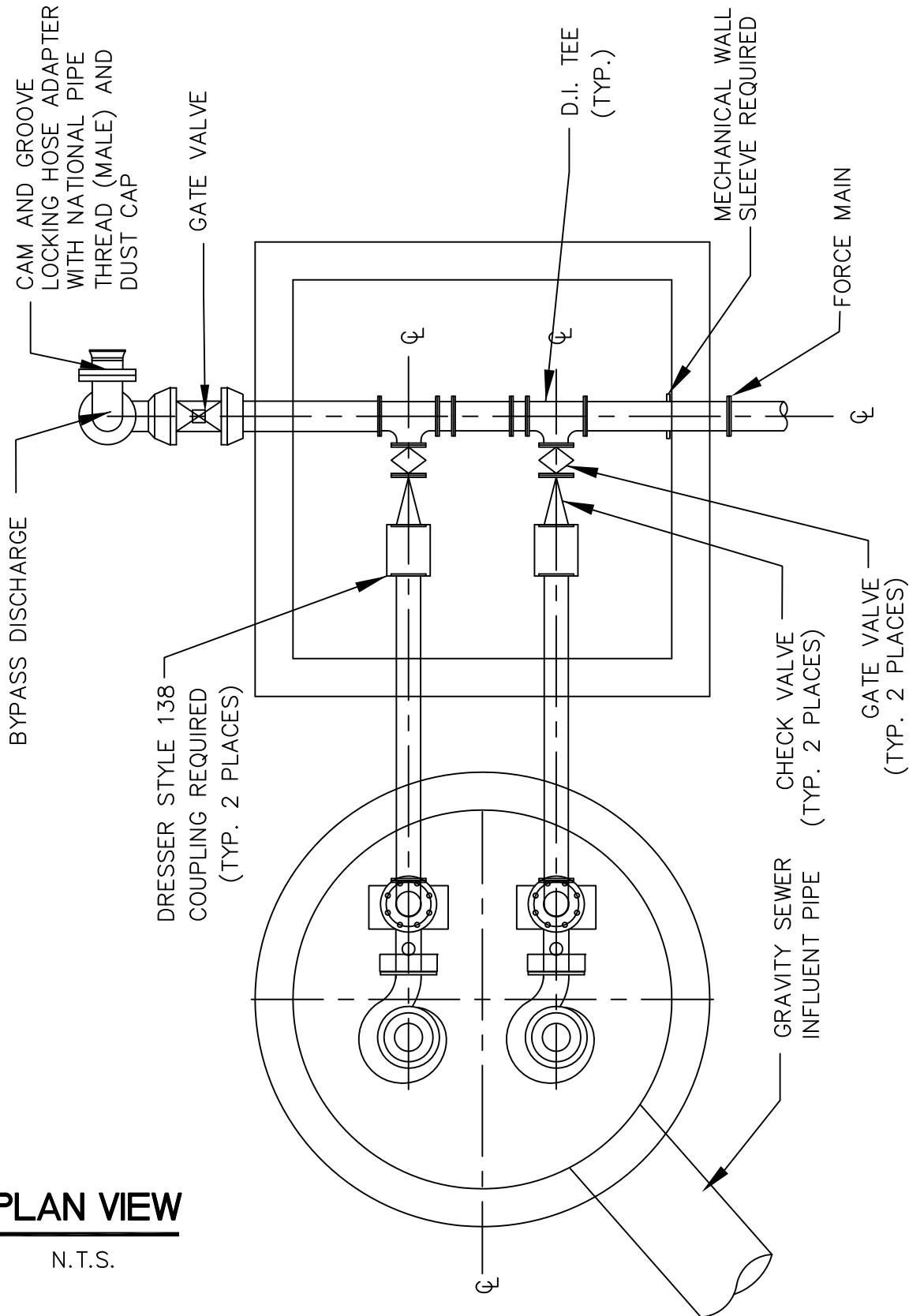
**PUMP STATION
GENERAL NOTES**

PAGE NUMBER:

PS-1

PLAN VIEW

N.T.S.



- NOTE:
1. THE STATION SHALL BE READILY ACCESSIBLE BY MAINTENANCE VEHICLES DURING ANY WEATHER.
 2. STATION SHALL HAVE 6" THICK CRUSHED STONE ACCESS DRIVE AND PAD. ACCESS DRIVE SHALL BE 12' WIDE (MIN.). PAD DIMENSIONS SHALL BE AS REQ'D BY THE AUTHORITY FOR ACCESS.
 3. MECHANICAL WALL SLEEVES SHALL BE REQ'D WHEN PIPE PENETRATES ANY WALL. SLEEVES SHALL BE BY LINK-SEAL OR APPROVED EQUAL.



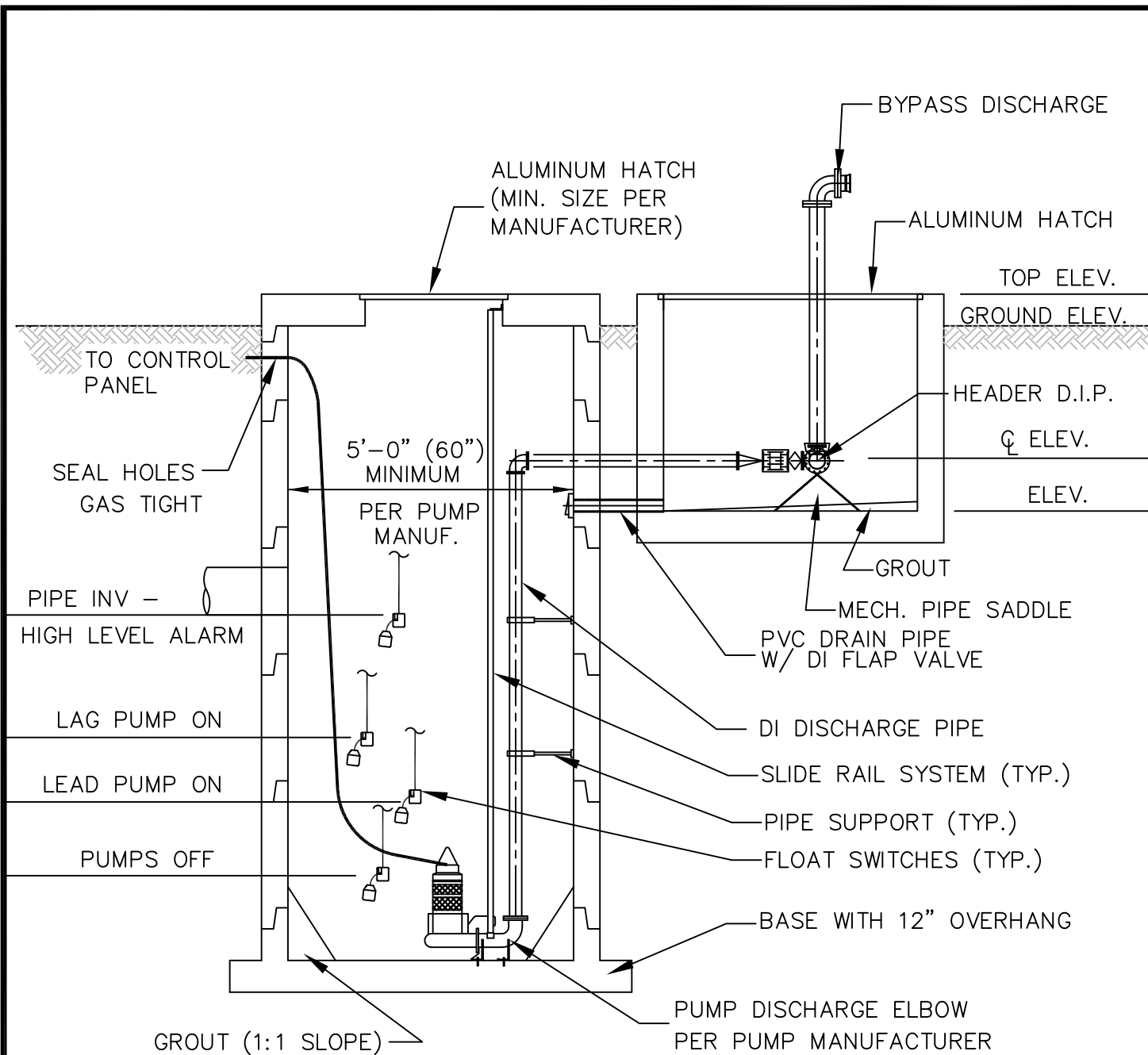
JACKSON COUNTY
UTILITY AUTHORITY

JACKSON COUNTY
UTILITY AUTHORITY
CONSTRUCTION
STANDARDS

STANDARD DUPLEX
PUMP STATION
PLAN VIEW

PAGE NUMBER:

PS-2



LIFT STATION SECTION

N.T.S.

PUMP STATION GROUND ELEVATION SHALL BE A MINIMUM OF 1' ABOVE 100 YEAR FLOOD ELEVATION AS DETERMINED BY FEMA FLOODMAPS.



JACKSON COUNTY
UTILITY AUTHORITY

JACKSON COUNTY
UTILITY AUTHORITY
CONSTRUCTION
STANDARDS

STANDARD DUPLEX
PUMP STATION
SECTION VIEW

PAGE NUMBER:

PS-3



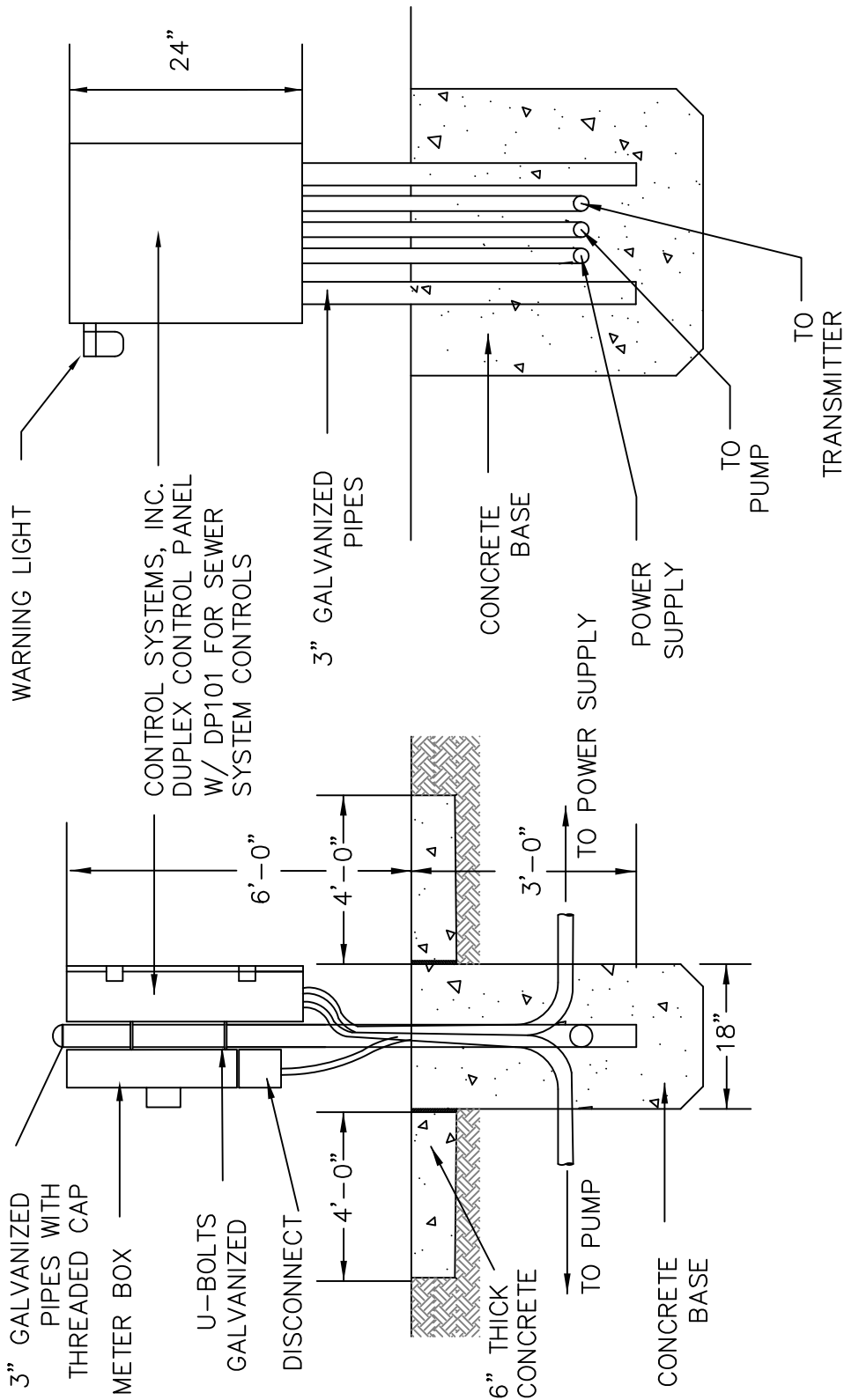
JACKSON COUNTY
UTILITY AUTHORITY

JACKSON COUNTY
UTILITY AUTHORITY
CONSTRUCTION
STANDARDS

CONTROL PANEL
DETAILS

PAGE NUMBER:

PS-4

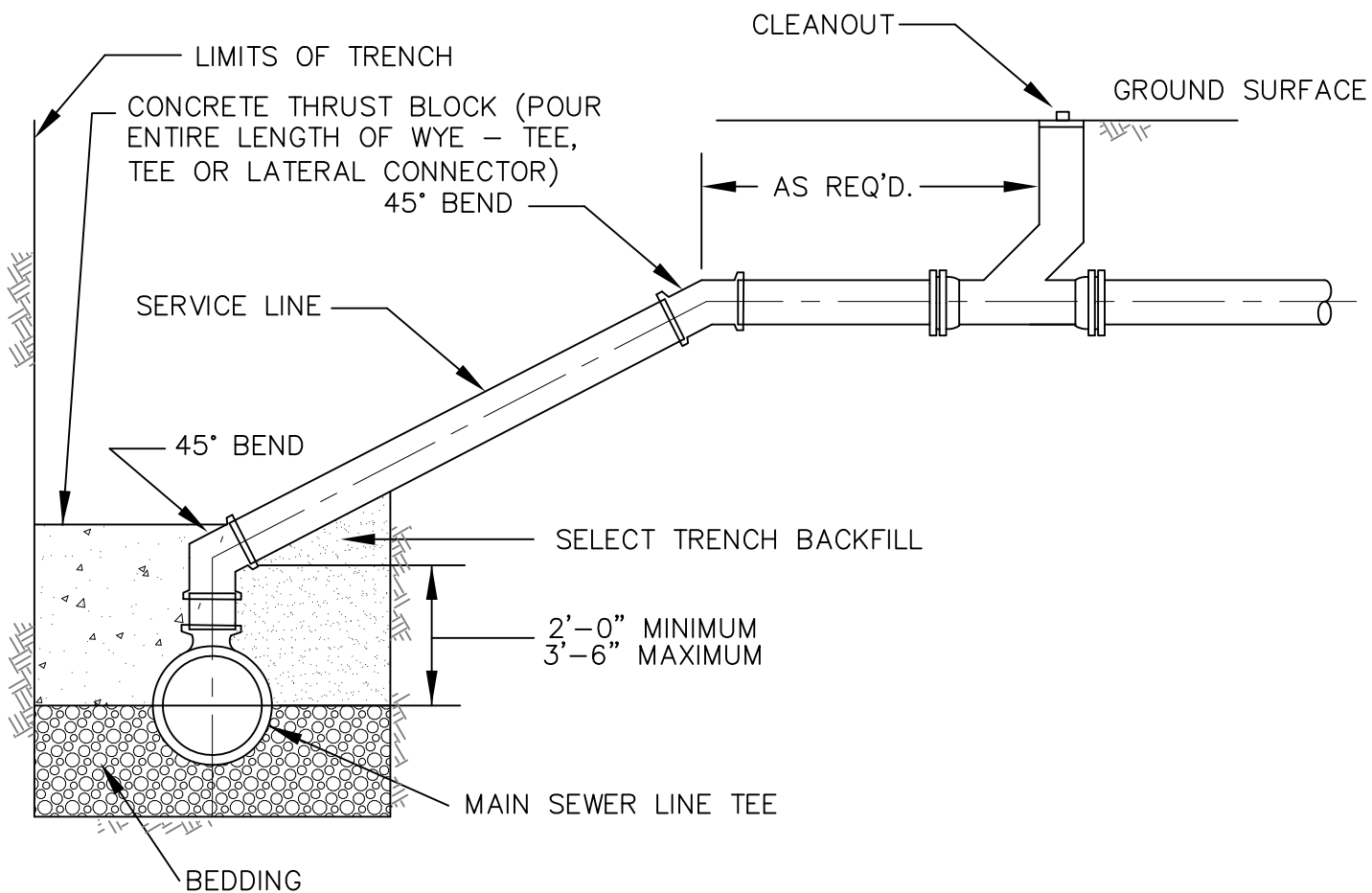


TYPICAL CONTROL PANEL DETAILS

N.T.S.

NOTE:

1. ELECTRICAL CONDUIT ABOVE GROUND SHALL BE RIGID GALVANIZED TYPE CONDUIT FROM THE BEND TO ITS TERMINATION POINT.
2. BOTTOM OF PANEL SHALL BE AT LEAST 1' ABOVE 100 YEAR FLOOD ELEVATION AS DETERMINED BY FEMA FLOOD MAPS.



SERVICE CONNECTION FOR DEEP SEWER SLOPES GREATER THAN 25 PERCENT

N.T.S.



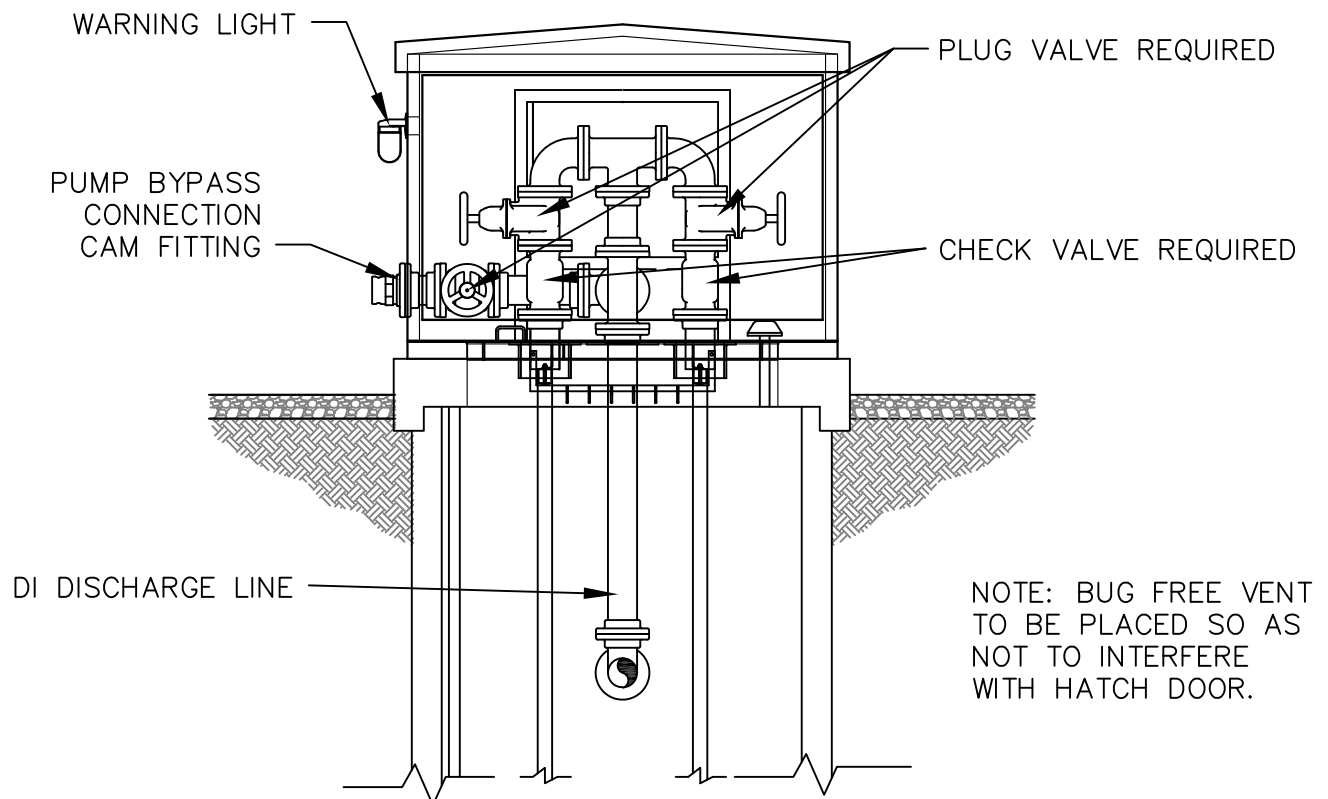
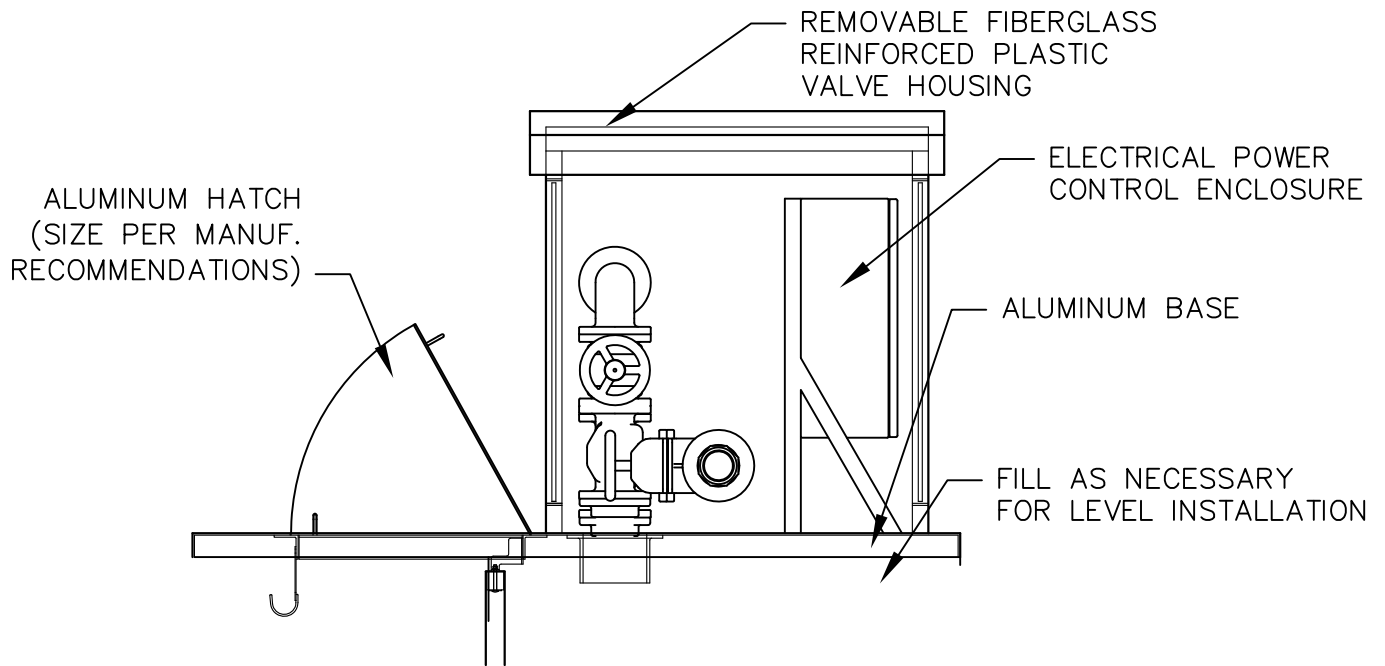
JACKSON COUNTY
UTILITY AUTHORITY

JACKSON COUNTY
UTILITY AUTHORITY
CONSTRUCTION
STANDARDS

SERVICE CONNECTION
FOR DEEP SEWER
SLOPES GREATER
THAN 25 PERCENT

PAGE NUMBER:

SS-5



ABOVE GROUND VALVE CONFIGURATION

N.T.S.



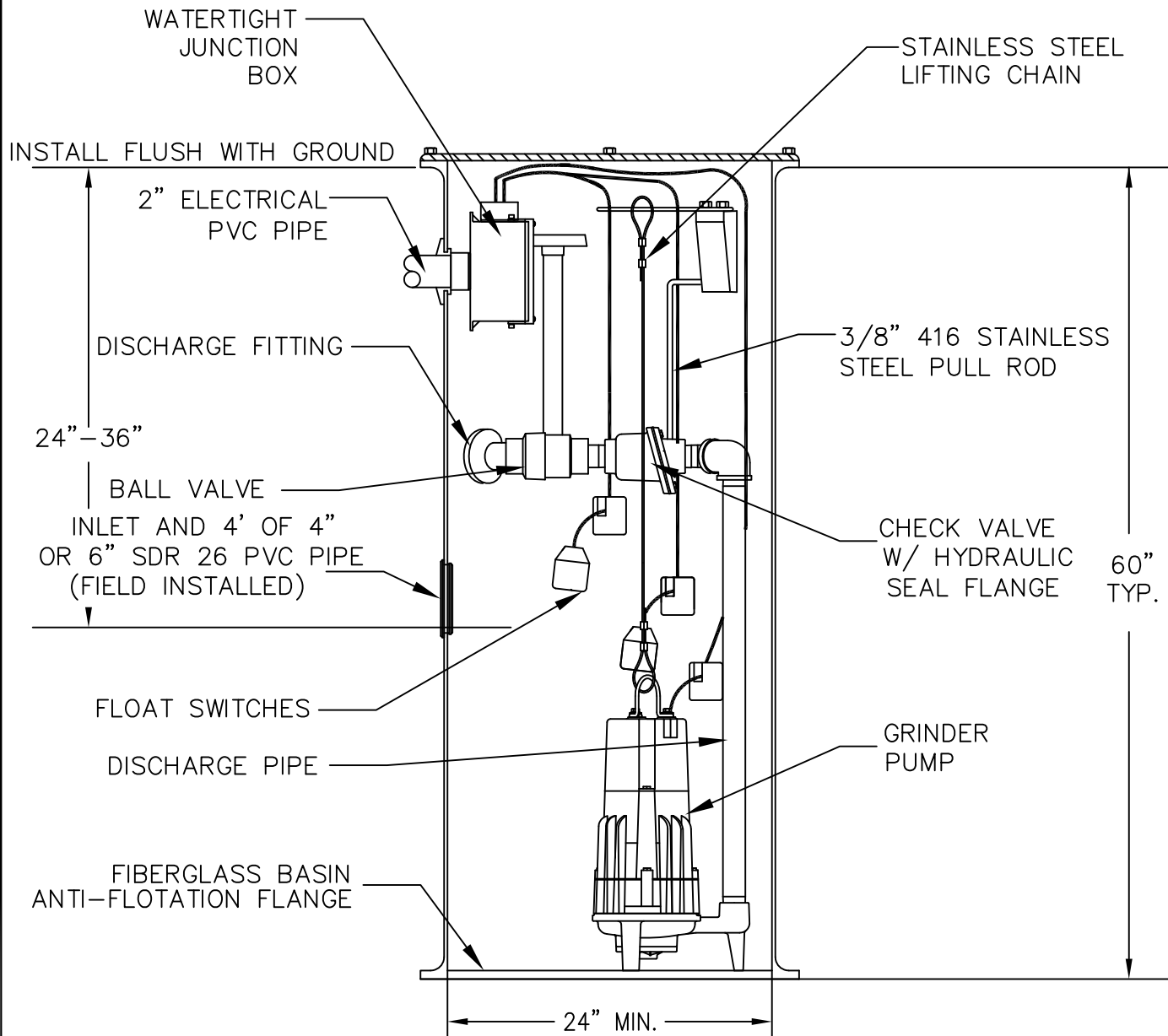
JACKSON COUNTY
UTILITY AUTHORITY

JACKSON COUNTY
UTILITY AUTHORITY
CONSTRUCTION
STANDARDS

ABOVE-GROUND
VALVE PACKAGE
PUMP STATION
VALVES AND
CONTROLS (ALT.)

PAGE NUMBER:

PS-6



SIMPLEX GRINDER PUMP STATION

N.T.S.

NOTE: CONTROL PANEL TO BE MOUNTED ON HOUSE AT LEAST 4 FEET ABOVE GROUND.



**JACKSON COUNTY
UTILITY AUTHORITY**

**JACKSON COUNTY
UTILITY AUTHORITY
CONSTRUCTION
STANDARDS**

**SIMPLEX GRINDER
PUMP STATION
DETAIL**

PAGE NUMBER:

PS-7



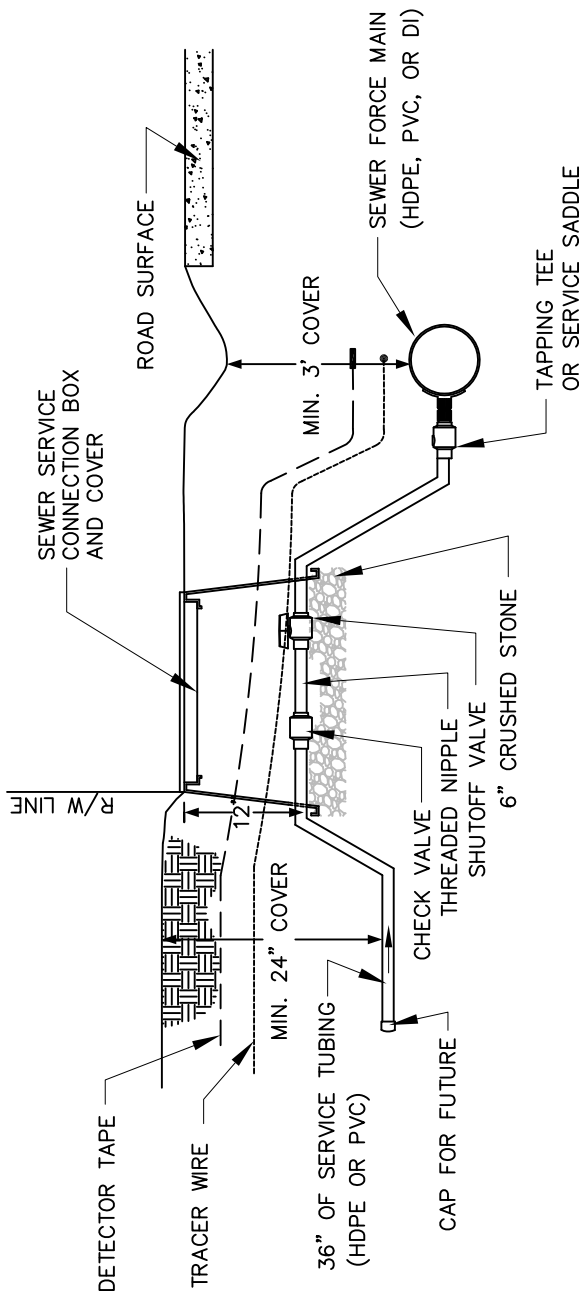
JACKSON COUNTY
UTILITY AUTHORITY

JACKSON COUNTY
UTILITY AUTHORITY
CONSTRUCTION
STANDARDS

PRESSURE SEWER
SERVICE CONNECTION
DETAIL

PAGE NUMBER:

PS-8

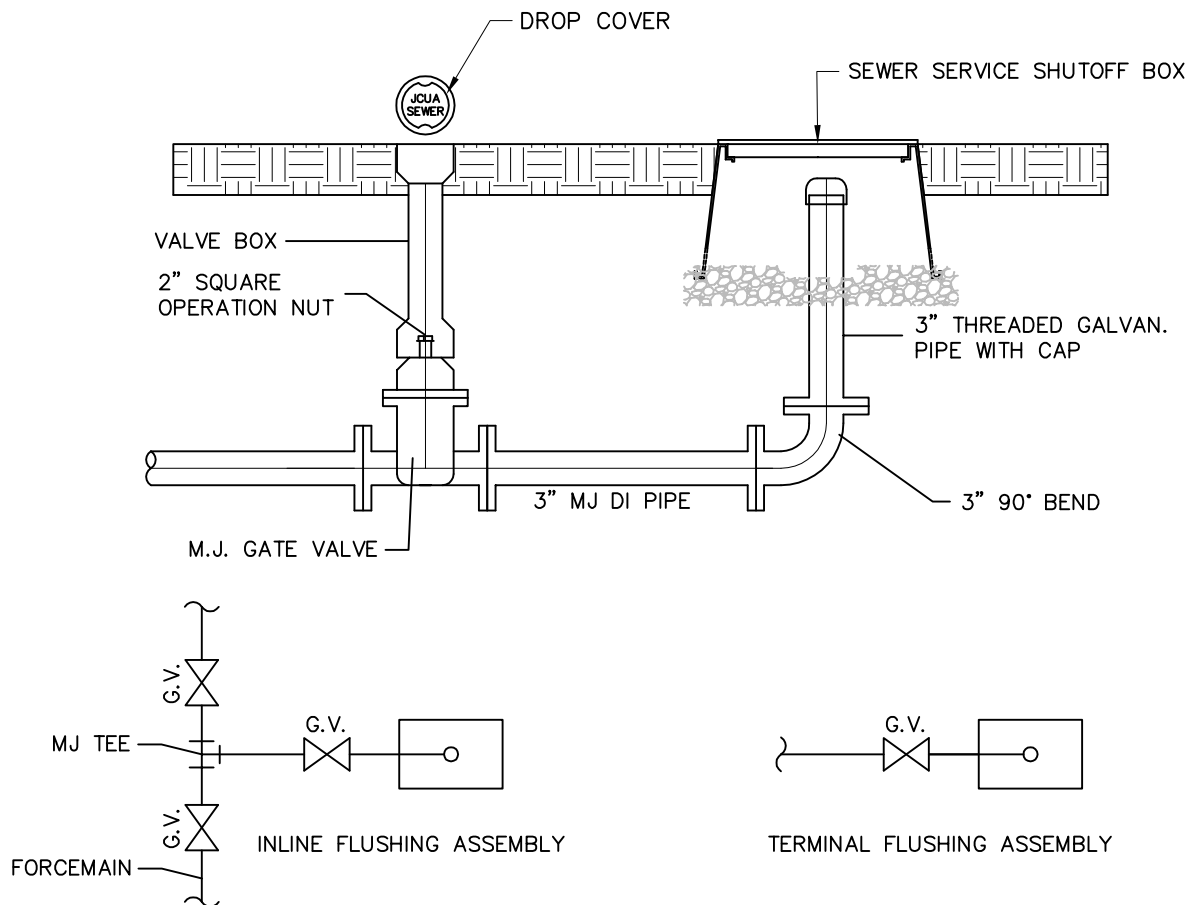


PRESSURE SEWER SERVICE CONNECTION DETAIL

N.T.S.

NOTE:

ALL STEP TYPE TANKS AND GRINDER PUMP STATIONS SHALL REQUIRE THIS CONNECTION TO SEWER FORCE MAIN. CONTRACTOR SHALL INSTALL A CONNECTION FOR EACH INDIVIDUAL LOT AND VALVE ASSEMBLY AND INSTALL CAP ON EACH SERVICE FOR FUTURE CONNECTION. MINIMUM SERVICE TUBING SIZE SHALL BE 1" FOR STEP TANK TYPE SYSTEM AND 1 1/4" FOR LOW PRESSURE GRINDER TYPE SYSTEM, UNLESS OTHERWISE APPROVED BY THE AUTHORITY.



FLUSHING ASSEMBLY

N.T.S.

STEP TYPE (SEPTIC TANK) NOTES. SEE DETAIL PS-10:

1. SEPTIC TANK AND LID TO BE CONSTRUCTED OF 4,000 PSI CONCRETE.
2. TANK BOTTOM AND WALLS SHALL BE MONOLITHICALLY CONSTRUCTED. TOP SLAB SHALL BE POURED ON THE WALLS WITH WALL REINFORCEMENT EXTENDING INTO THE TOP SLAB. REINFORCEMENT FOR THE TANK SHALL BE DESIGNED BY STRUCTURAL ENGINEER FOR SPECIFIC INSTALLATION.
3. PROVIDE MANHOLE ACCESS AT EACH END OF TANK.
4. TANK AND LID TO BE COATED INSIDE AND OUT WITH THURO-SEAL OR OTHER APPROVED SEALANT.
5. TANK SHALL BE TESTED FOR LEAKS AND CERTIFIED BY THE MANUFACTURER PRIOR TO DELIVERY TO THE SITE.
6. SEPTIC TANKS IN TRAFFIC AREAS SHALL BE SPECIFICALLY DESIGNED FOR THE PROJECT CONDITIONS, CONTACT JACKSON COUNTY UTILITY AUTHORITY FOR REQUIREMENTS.



JACKSON COUNTY
UTILITY AUTHORITY

JACKSON COUNTY
UTILITY AUTHORITY
CONSTRUCTION
STANDARDS

MISCELLANEOUS
PRESSURE SEWER
DETAILS AND STEP
TANK NOTES

PAGE NUMBER:

PS-9



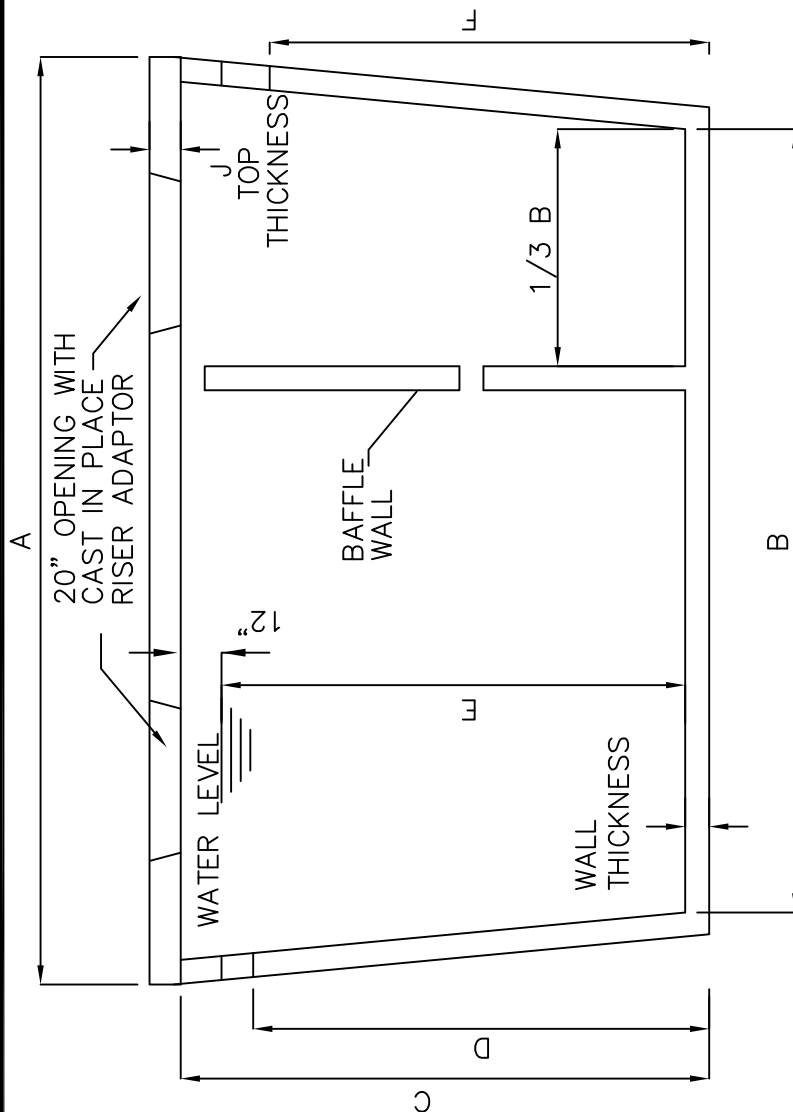
JACKSON COUNTY
UTILITY AUTHORITY

JACKSON COUNTY
UTILITY AUTHORITY
CONSTRUCTION
STANDARDS

STEP TANK DETAIL
FOR DE-CENTRALIZED
SANITARY SEWER
SYSTEM

PAGE NUMBER:

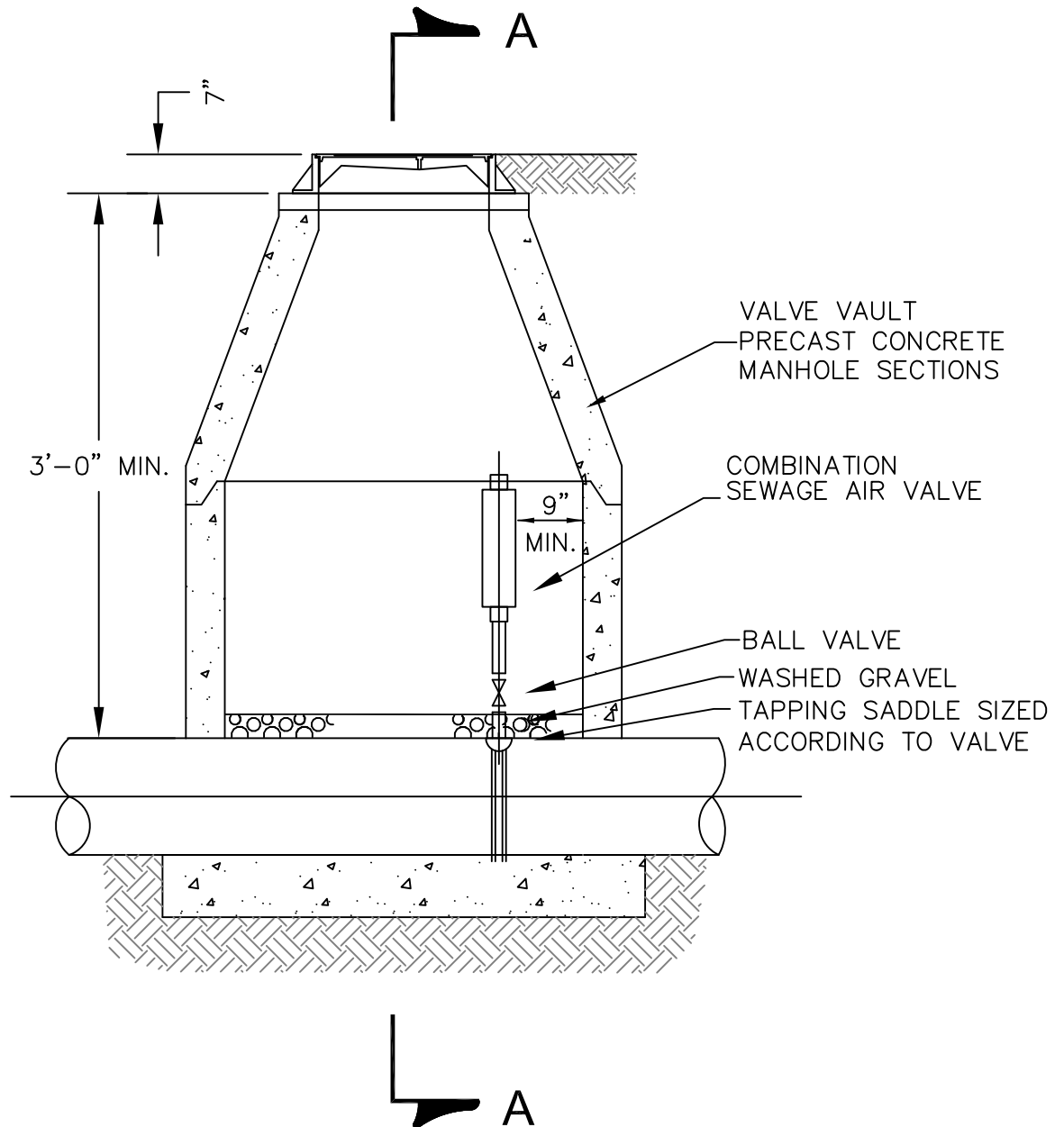
PS-10



	LENGTH		HEIGHT	INFLUENT HEIGHT	LIQUID LEVEL	EFFLUENT HEIGHT	WIDTH	WALLS & BTM. THICK.	TOP THICK.
TANK SIZE	A	B	C	D	E	F	G	H	J
1000 GALLON	8'-8"	7'-10"	5'-0"	4'-6"	4'-4"	4'-3"	5'-6"	4'-2"	4"
1500 GALLON	9'-11 1/4"	8'-8"	5'-7"	4'-9 1/4"	4'-4"	4'-6 1/2"	5'-7"	4'-7"	4"
2000 GALLON	14'-0"	12'-8"	4'-7"	4'-0"	3'-3"	3'-9"	6'-8"	5'-4"	6"
3000 GALLON	14'-0"	12'-8"	6'-11 1/2"	5'-9"	5'-4"	5'-6"	6'-8"	5'-4"	6"

STEP TYPE SEPTIC TANK DETAIL

N.T.S.



TYPICAL COMBINATION SEWAGE VALVE
INSTALLATION WITH MANHOLE
N.T.S.



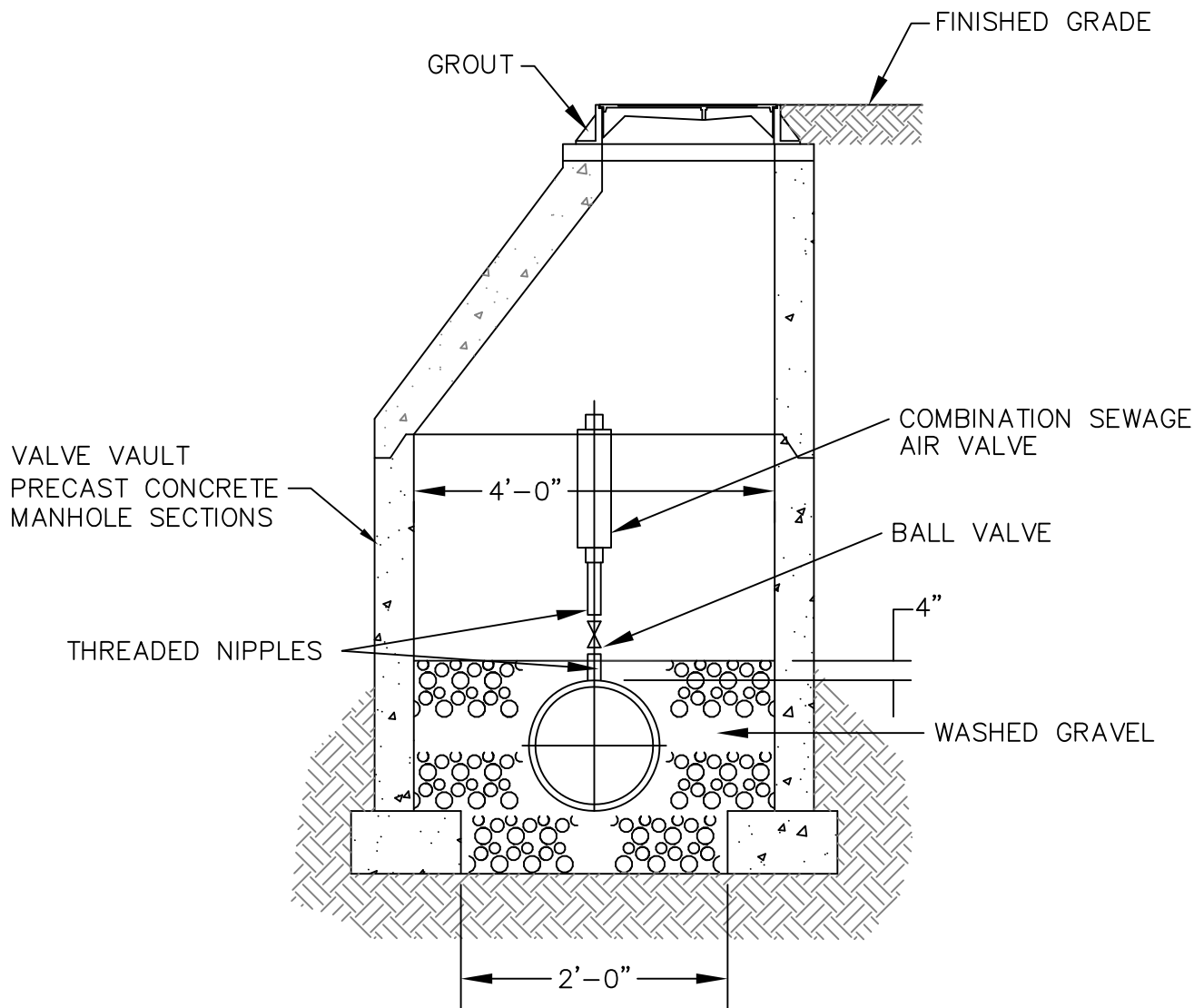
JACKSON COUNTY
UTILITY AUTHORITY

JACKSON COUNTY
UTILITY AUTHORITY
CONSTRUCTION
STANDARDS

TYPICAL COMBINATION
SEWAGE AIR
VALVE
INSTALLATION
WITH VAULT

PAGE NUMBER:

PS-11



TYPICAL COMBINATION SEWAGE VALVE WITH MANHOLE SECTION A-A

N.T.S.



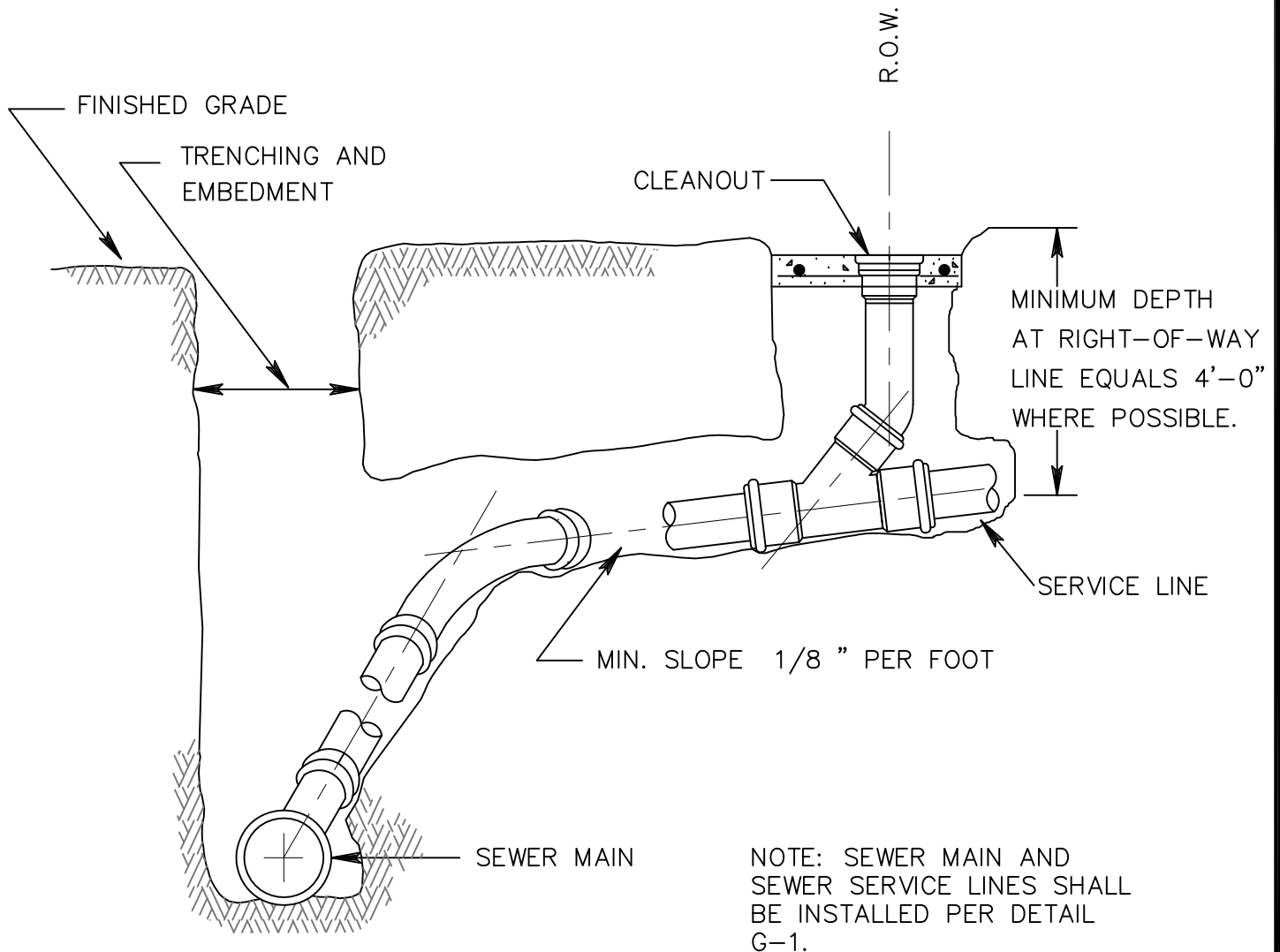
**JACKSON COUNTY
UTILITY AUTHORITY**

**JACKSON COUNTY
UTILITY AUTHORITY
CONSTRUCTION
STANDARDS**

TYPICAL COMBINATION
SEWAGE AIR VALVE
SECTION A-A

PAGE NUMBER:

PS-12



SECTION - SINGLE WYE SERVICE

N.T.S.



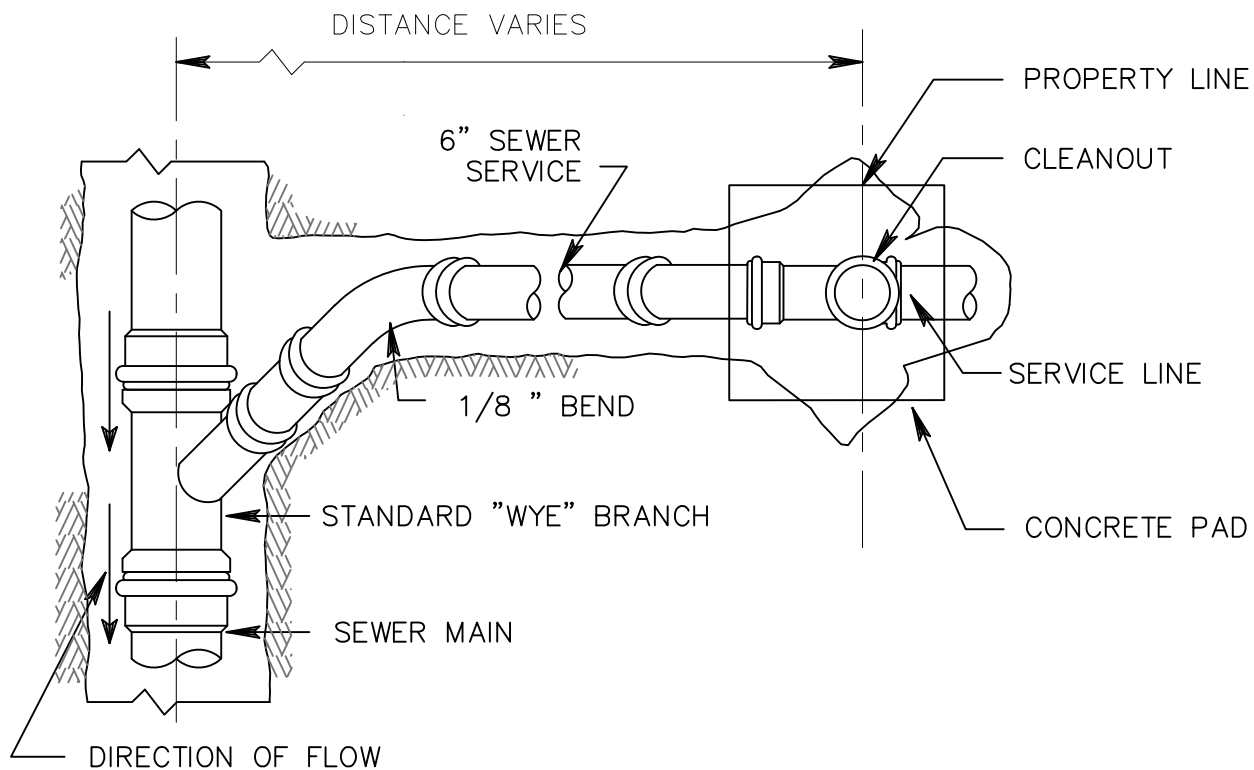
JACKSON COUNTY
UTILITY AUTHORITY

JACKSON COUNTY
UTILITY AUTHORITY
CONSTRUCTION
STANDARDS

SECTION
SINGLE WYE
SERVICE

PAGE NUMBER:

SS-1



PLAN - SINGLE WYE SERVICE SEWER SERVICE DETAILS

N.T.S.



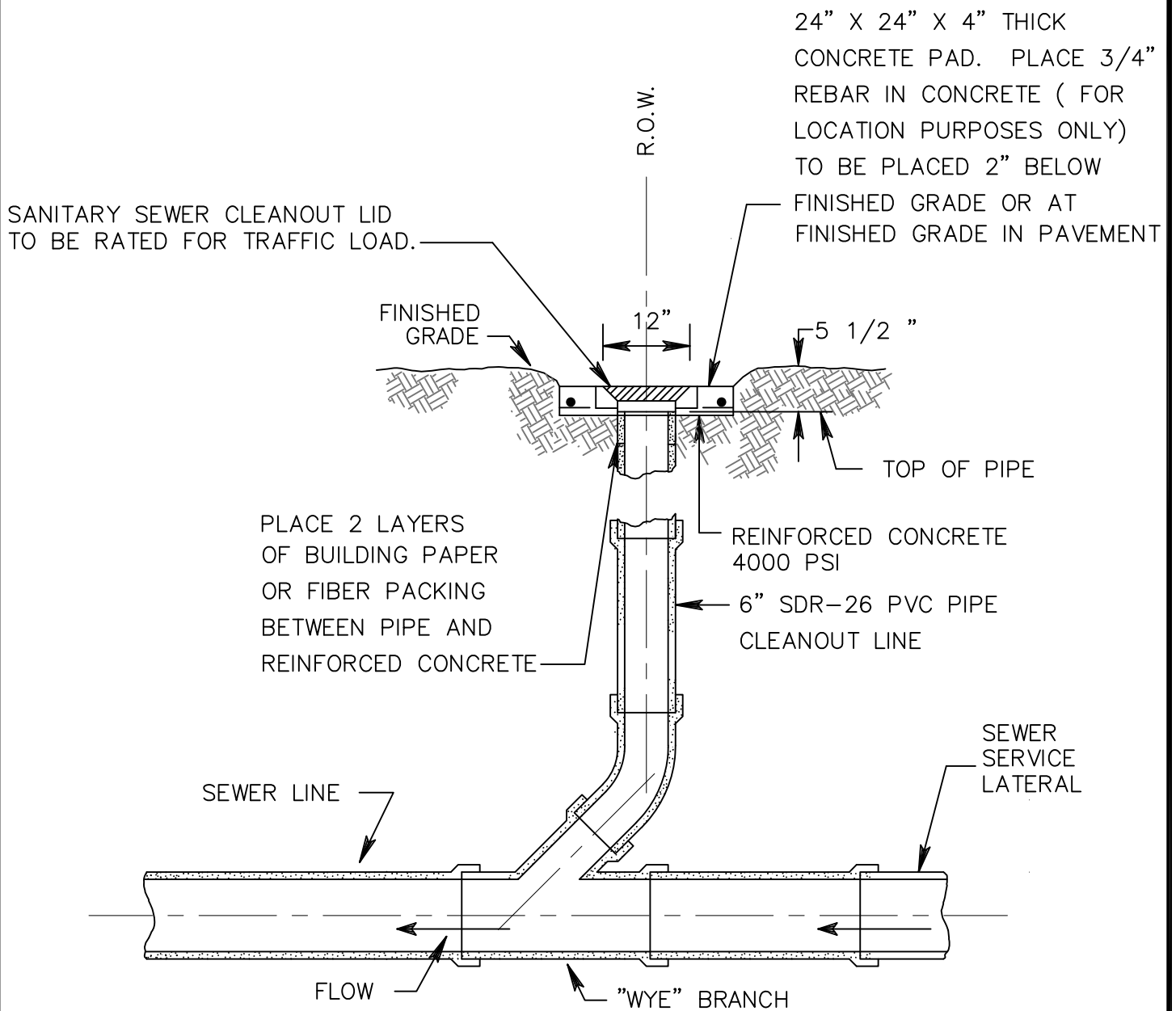
**JACKSON COUNTY
UTILITY AUTHORITY**

**JACKSON COUNTY
UTILITY AUTHORITY
CONSTRUCTION
STANDARDS**

PLAN
SEWER SERVICE
DETAIL

PAGE NUMBER:

SS-2



SEWER CLEANOUT

N.T.S.



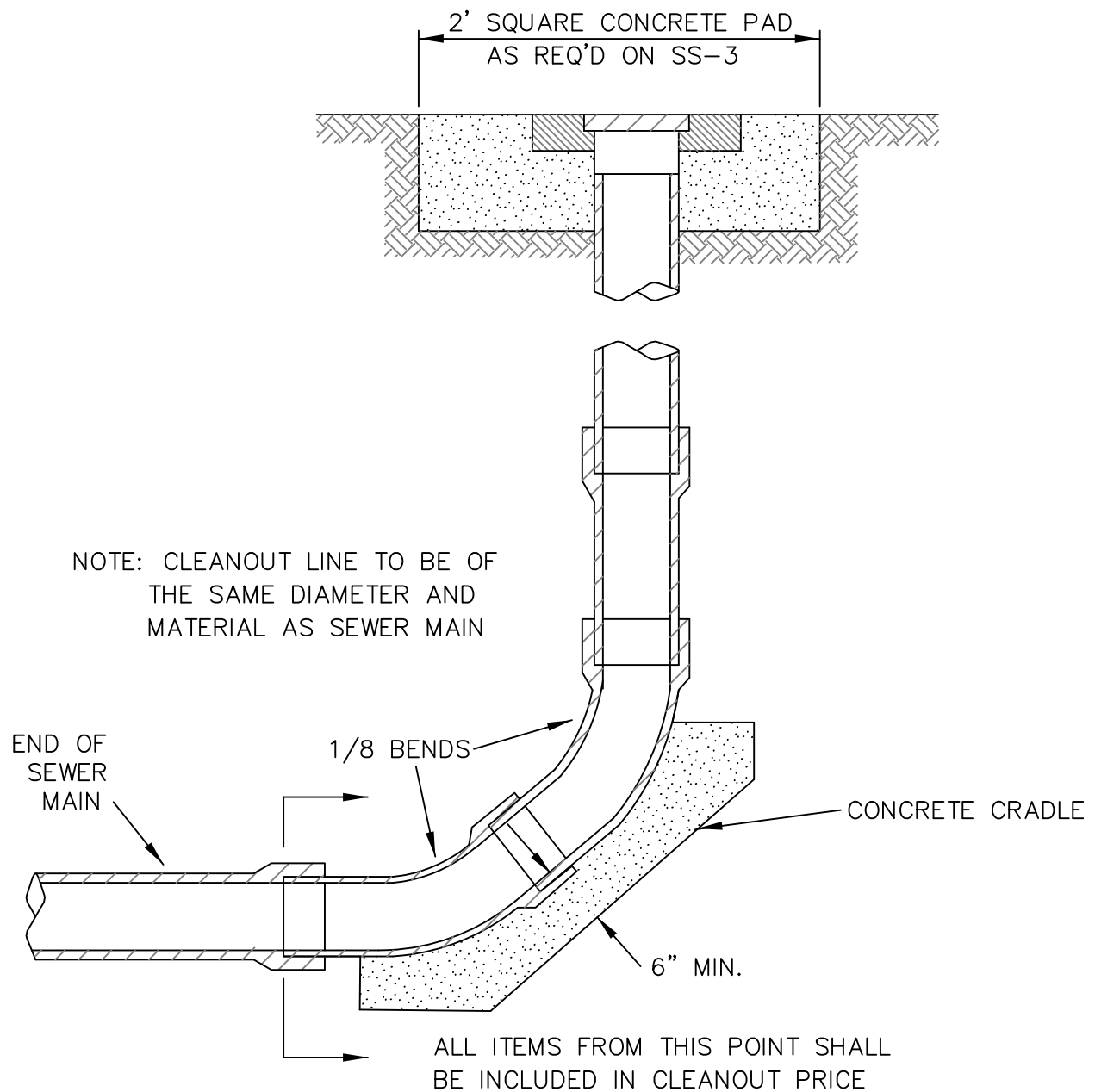
JACKSON COUNTY
UTILITY AUTHORITY

JACKSON COUNTY
UTILITY AUTHORITY
CONSTRUCTION
STANDARDS

SEWER
CLEANOUT
DETAIL

PAGE NUMBER:

SS-3



TERMINAL CLEANOUT DETAIL

N.T.S.



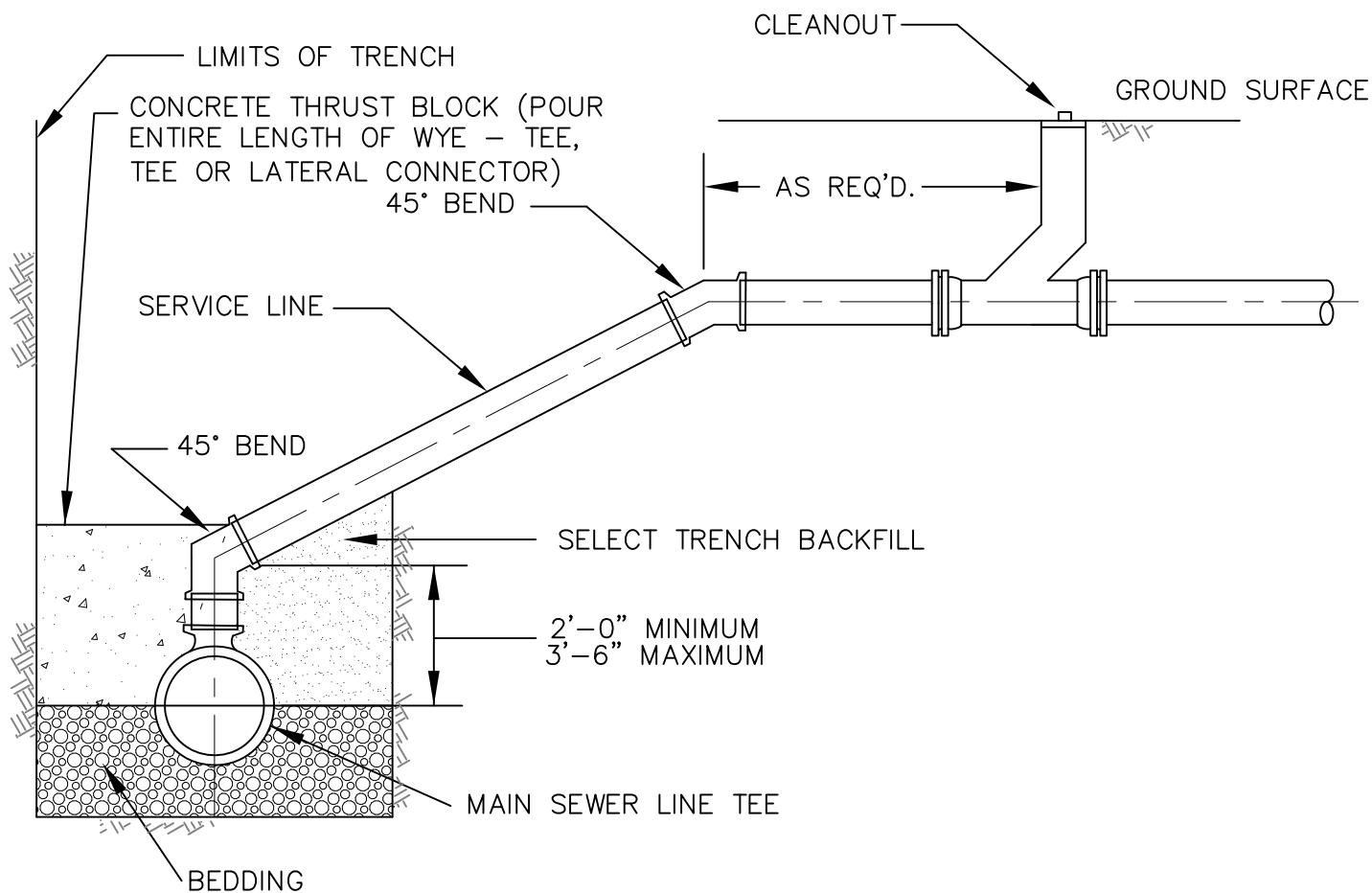
JACKSON COUNTY
UTILITY AUTHORITY

JACKSON COUNTY
UTILITY AUTHORITY
CONSTRUCTION
STANDARDS

TERMINAL CLEANOUT
DETAIL

PAGE NUMBER:

SS-4



SERVICE CONNECTION FOR DEEP SEWER SLOPES GREATER THAN 25 PERCENT

N.T.S.



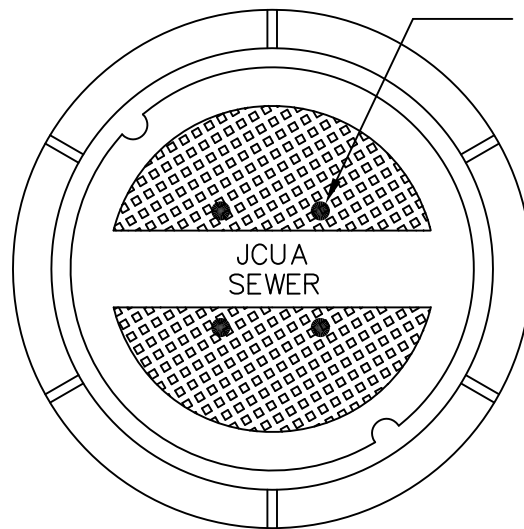
JACKSON COUNTY
UTILITY AUTHORITY

JACKSON COUNTY
UTILITY AUTHORITY
CONSTRUCTION
STANDARDS

SERVICE CONNECTION
FOR DEEP SEWER
SLOPES GREATER
THAN 25 PERCENT

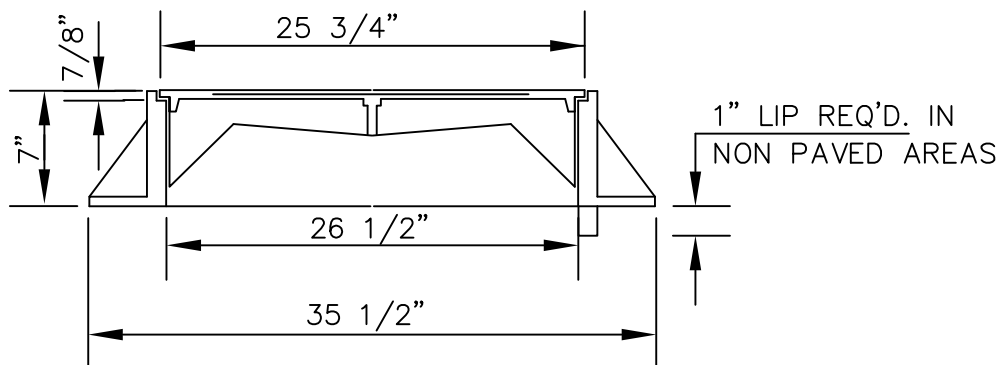
PAGE NUMBER:

SS-5



1" HOLES FOR MANHOLES
COVERS NOT REQUIRED TO
BE WATERTIGHT

TOP PLAN OF COVER



SECTION

STANDARD MANHOLE FRAME AND COVER

N.T.S.



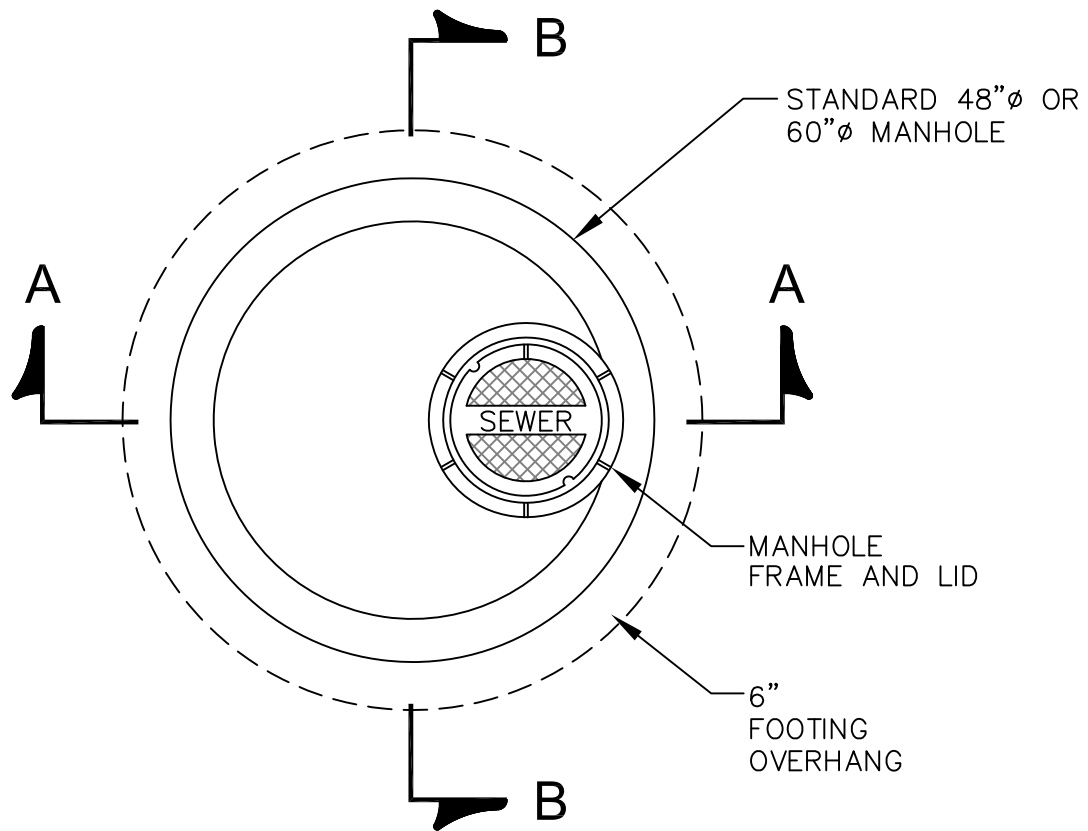
JACKSON COUNTY
UTILITY AUTHORITY

JACKSON COUNTY
UTILITY AUTHORITY
CONSTRUCTION
STANDARDS

SEWER MANHOLE
FRAME AND COVER

PAGE NUMBER:

SS-6



PLAN



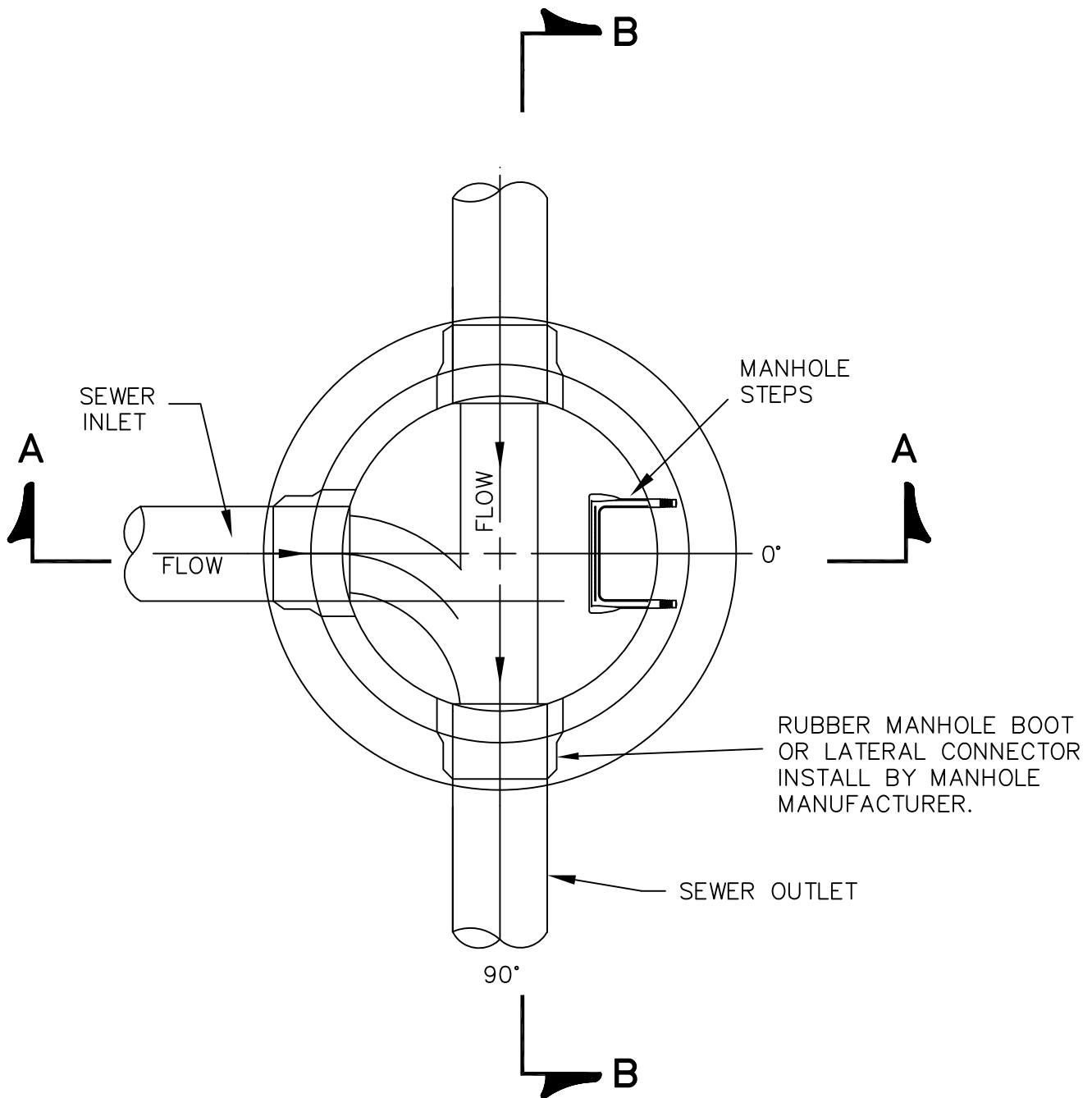
JACKSON COUNTY
UTILITY AUTHORITY

JACKSON COUNTY
UTILITY AUTHORITY
CONSTRUCTION
STANDARDS

MANHOLE
PLAN VIEW

PAGE NUMBER:

SS-7



SECTIONAL PLAN
STANDARD MANHOLE

N.T.S.



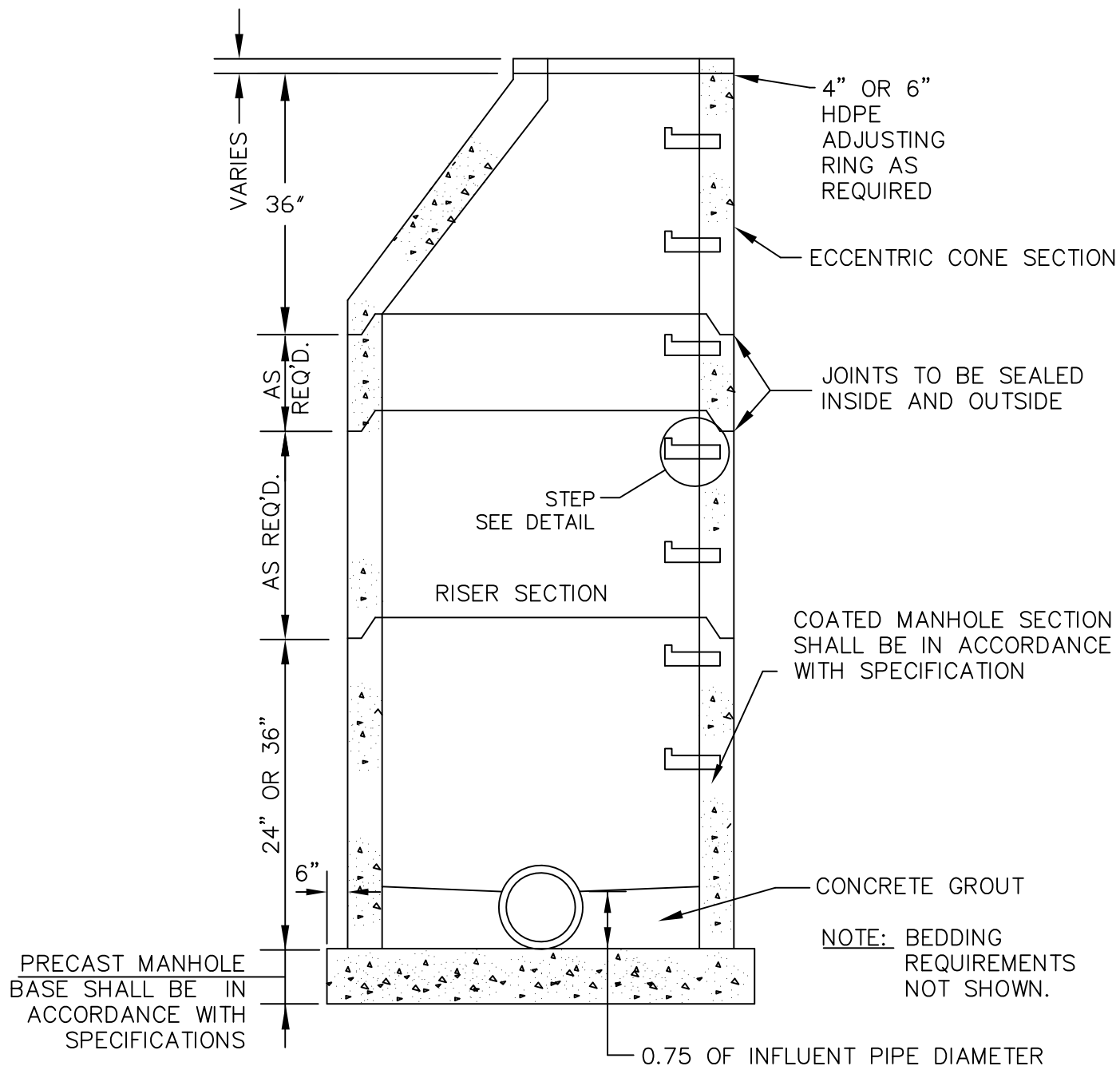
JACKSON COUNTY
UTILITY AUTHORITY

JACKSON COUNTY
UTILITY AUTHORITY
CONSTRUCTION
STANDARDS

MANHOLE INVERT
PLAN VIEW

PAGE NUMBER:

SS-8



SECTION A-A OF 4' OR 5' PRECAST MANHOLE

N.T.S.



JACKSON COUNTY
UTILITY AUTHORITY

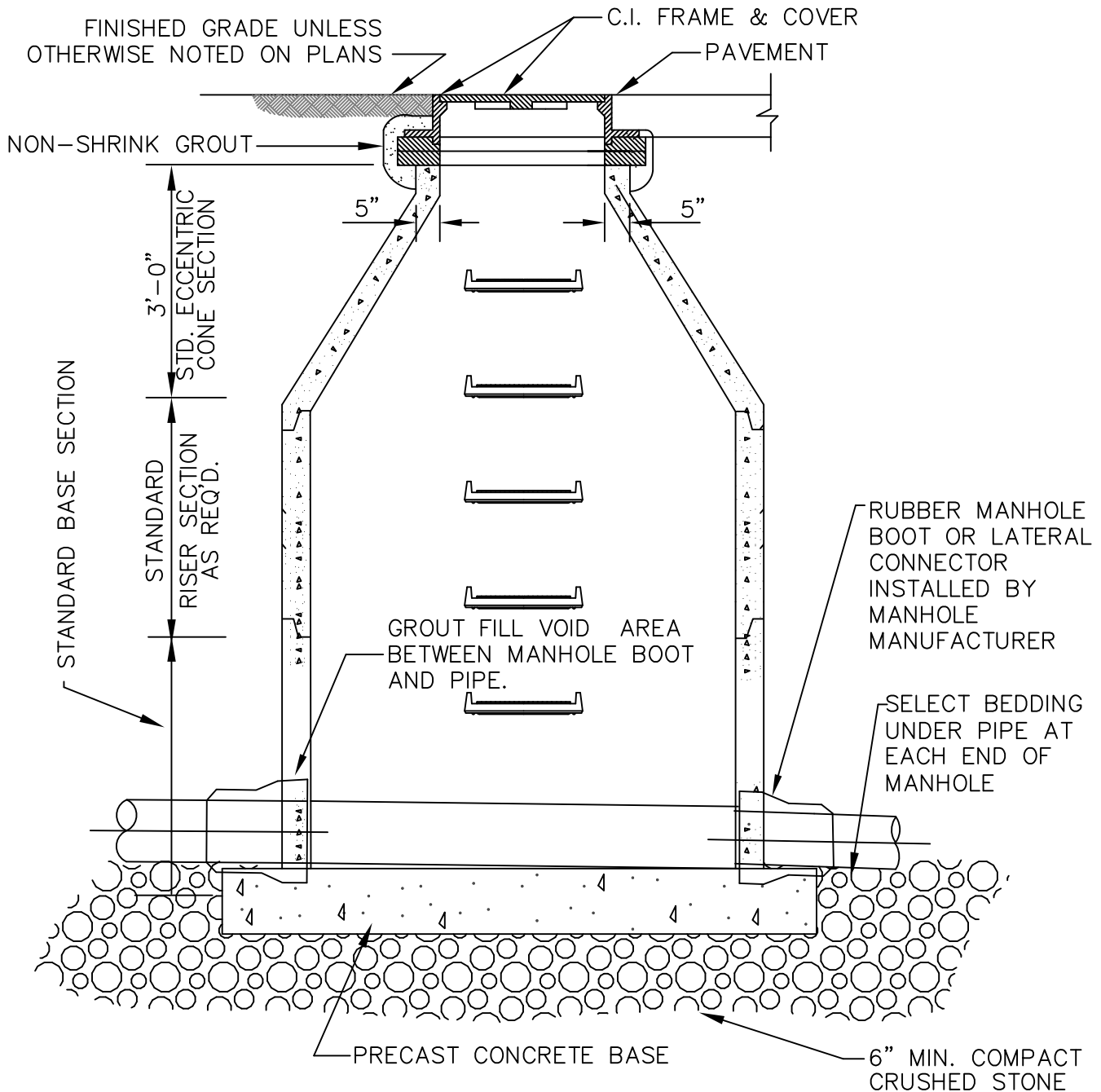
JACKSON COUNTY
UTILITY AUTHORITY
CONSTRUCTION
STANDARDS

SECTION A-A OF 4'
OR 5' DIAMETER
MANHOLE

PAGE NUMBER:

SS-9

MINIMUM SLOPE, IF APPLICABLE, THROUGH
MANHOLE SHALL NOT BE LESS THAN THE
AVERAGE OF THE SLOPES OF THE INCOMING
AND OUTGOING SEWER LINE.



SECTION OF 4' OR 5' PRECAST MANHOLE

N.T.S.



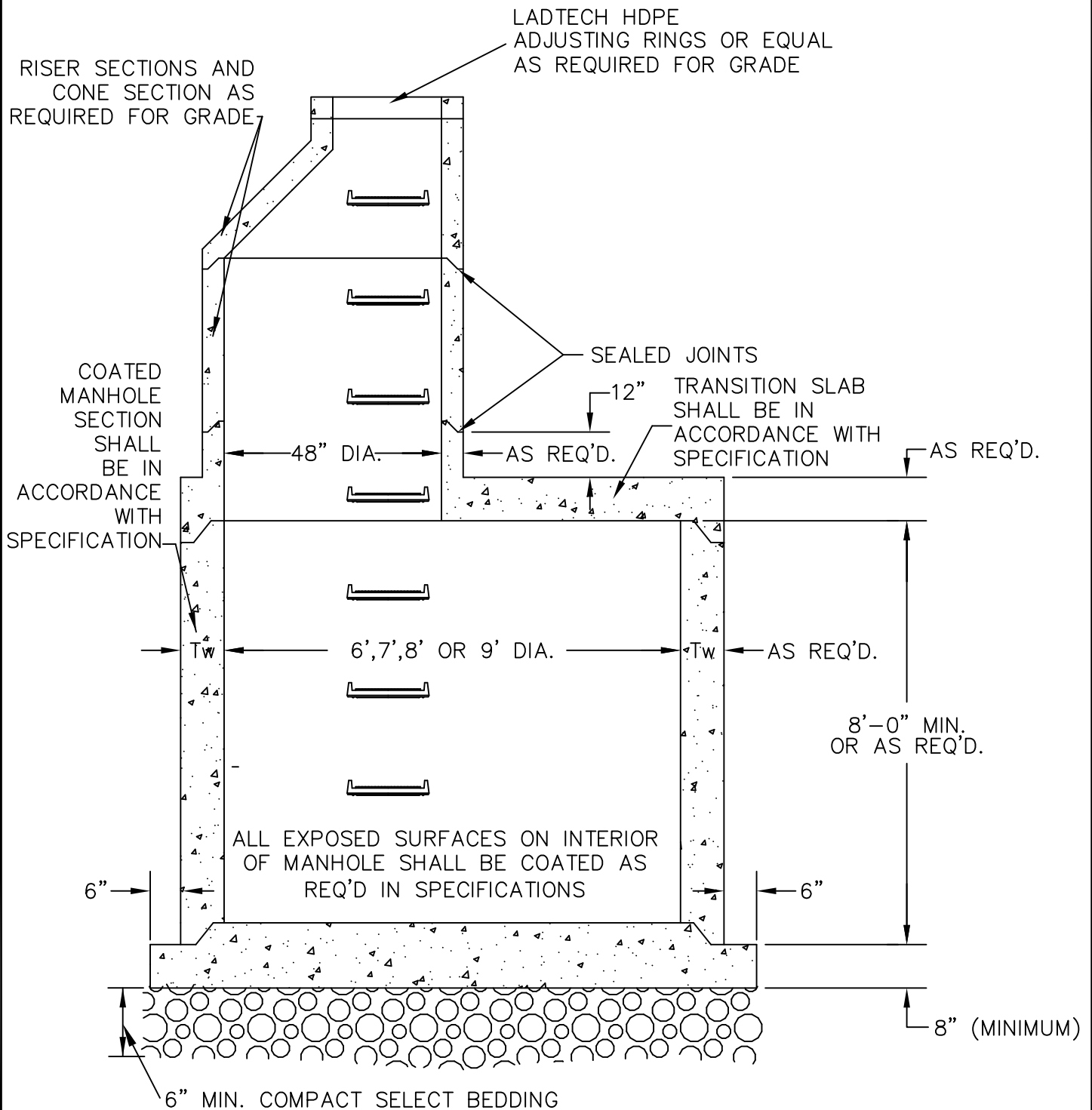
JACKSON COUNTY
UTILITY AUTHORITY

JACKSON COUNTY
UTILITY AUTHORITY
CONSTRUCTION
STANDARDS

SECTION B-B OF 4'
OR 5' DIAMETER
MANHOLE

PAGE NUMBER:

SS-10



6', 7', 8' OR 9' STANDARD PRECAST MANHOLE DETAIL

N.T.S.



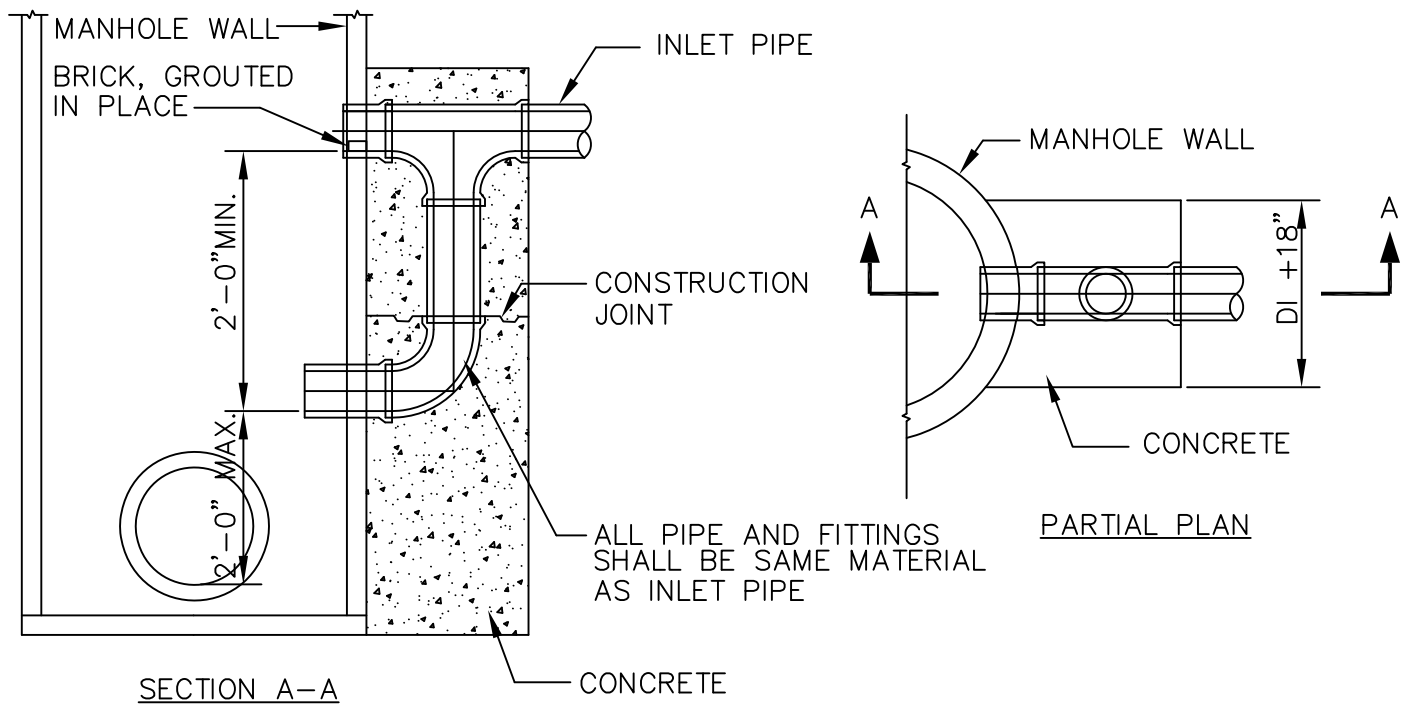
JACKSON COUNTY
UTILITY AUTHORITY

JACKSON COUNTY
UTILITY AUTHORITY
CONSTRUCTION
STANDARDS

6', 7', 8', OR 9'
DIAMETER
STANDARD
MANHOLE DETAIL

PAGE NUMBER:

SS-11



TYPICAL DROP INLET CONNECTION AT MANHOLE

N.T.S.



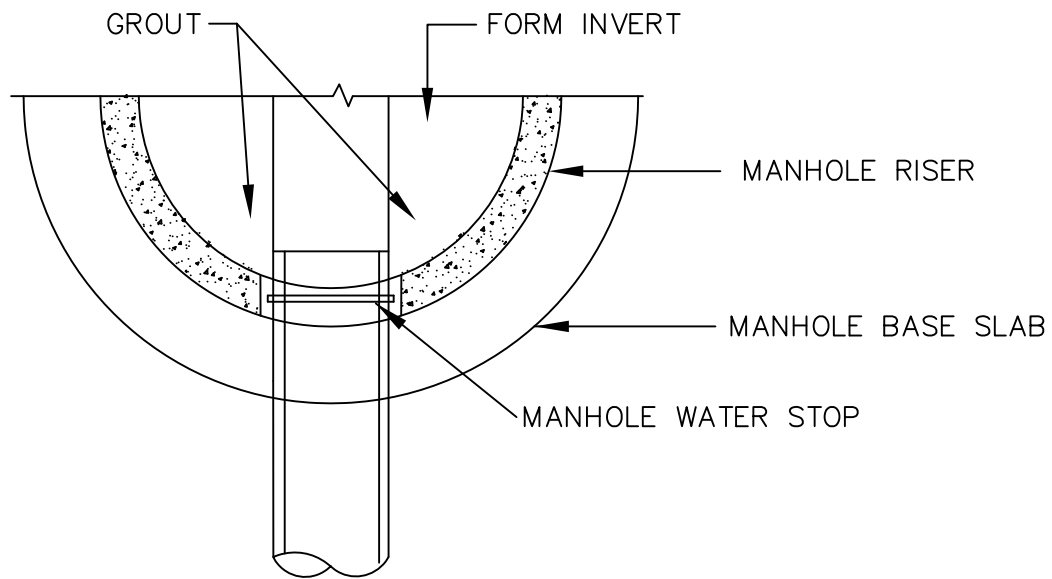
JACKSON COUNTY
UTILITY AUTHORITY

JACKSON COUNTY
UTILITY AUTHORITY
CONSTRUCTION
STANDARDS

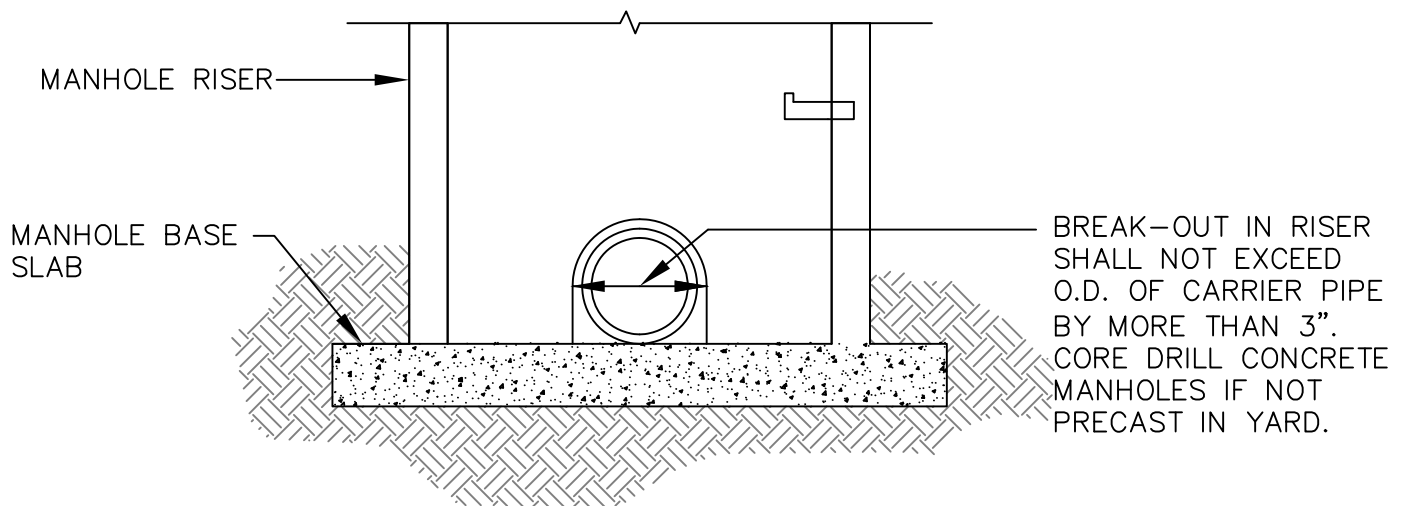
TYPICAL DROP
INLET CONNECTION
AT MANHOLE

PAGE NUMBER:

SS-12



PLAN



ELEVATION

TYPICAL DETAIL OF SEWER PIPE CONNECTION TO EXISTING MANHOLE

N.T.S.



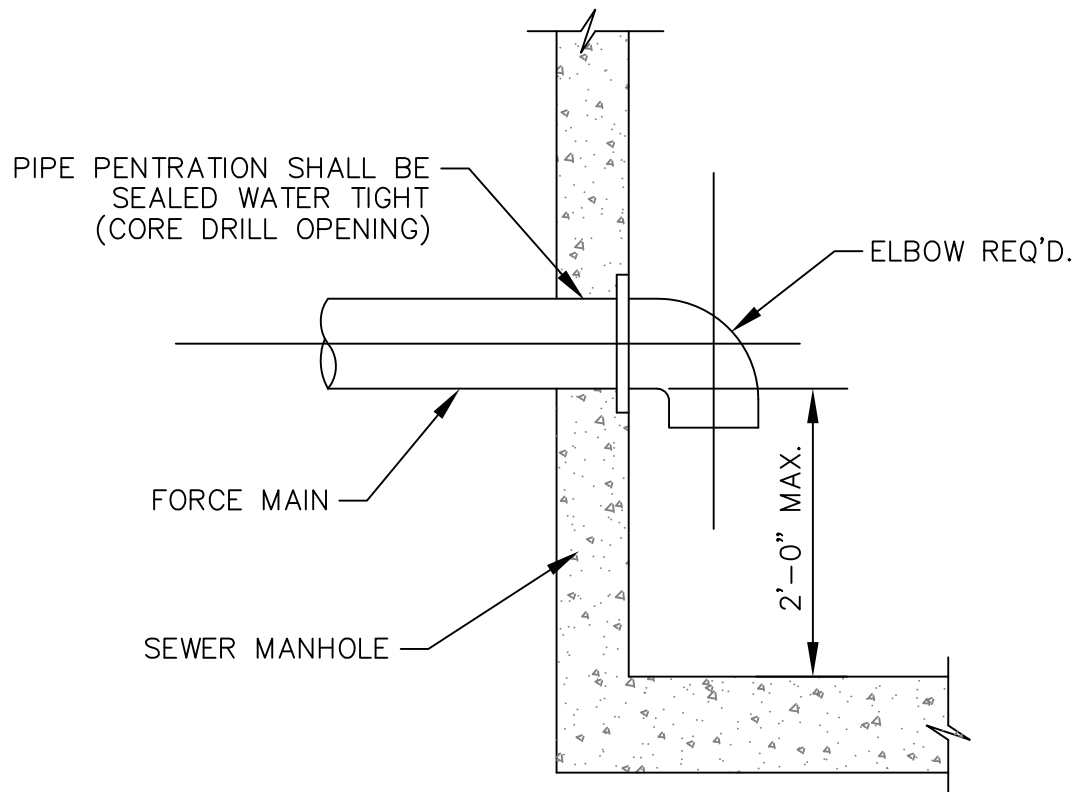
JACKSON COUNTY
UTILITY AUTHORITY

JACKSON COUNTY
UTILITY AUTHORITY
CONSTRUCTION
STANDARDS

TYPICAL DETAIL OF
SEWER PIPE
CONNECTION TO
EXISTING MANHOLE

PAGE NUMBER:

SS-13



FORCE MAIN CONNECTION TO MANHOLE

N.T.S.



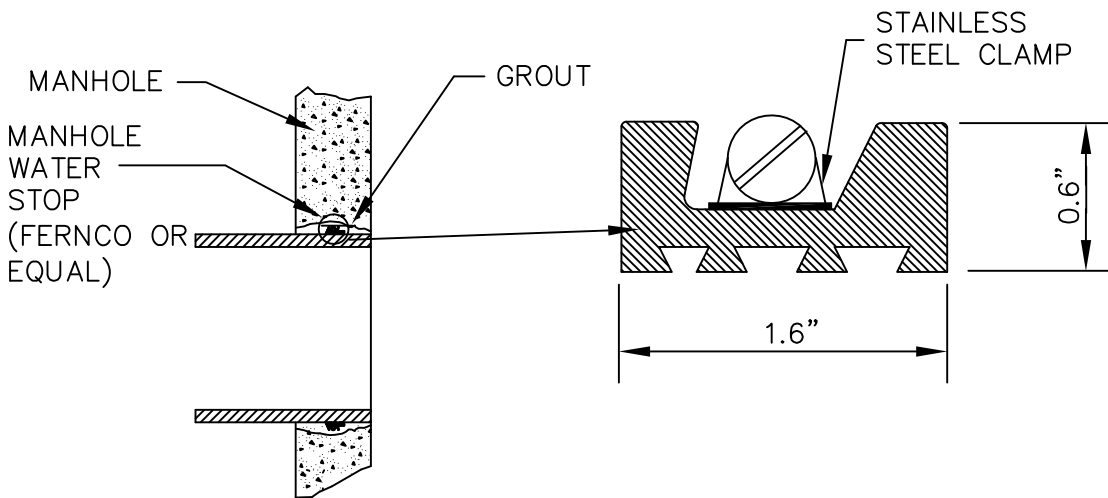
JACKSON COUNTY
UTILITY AUTHORITY

JACKSON COUNTY
UTILITY AUTHORITY
CONSTRUCTION
STANDARDS

FORCE MAIN
CONNECTION TO
MANHOLE

PAGE NUMBER:

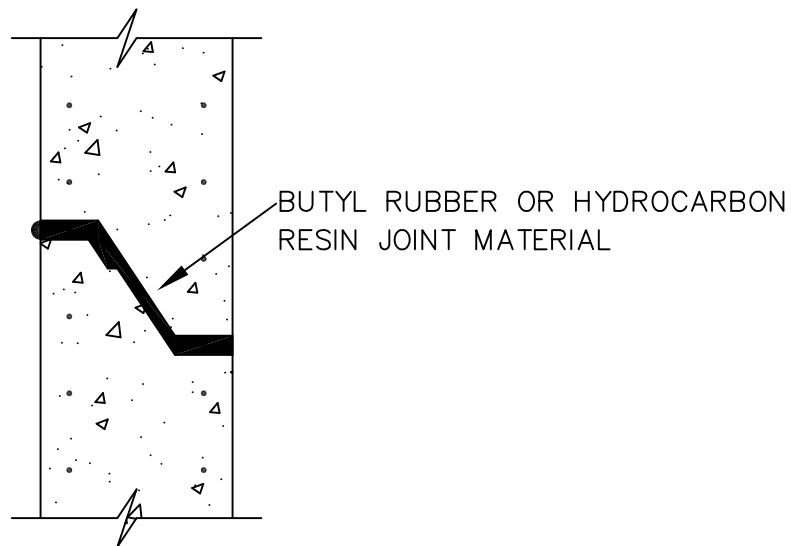
SS-14



NOTE: MANHOLE CUTOUT SHALL BE ROUGHENED PRIOR TO FILLING VOID AREA BETWEEN MANHOLE AND PIPE

TYPICAL MANHOLE WATER STOP

EXISTING AND "STRADDLE" MANHOLES
N.T.S.



PRECAST JOINT DETAIL

N.T.S.



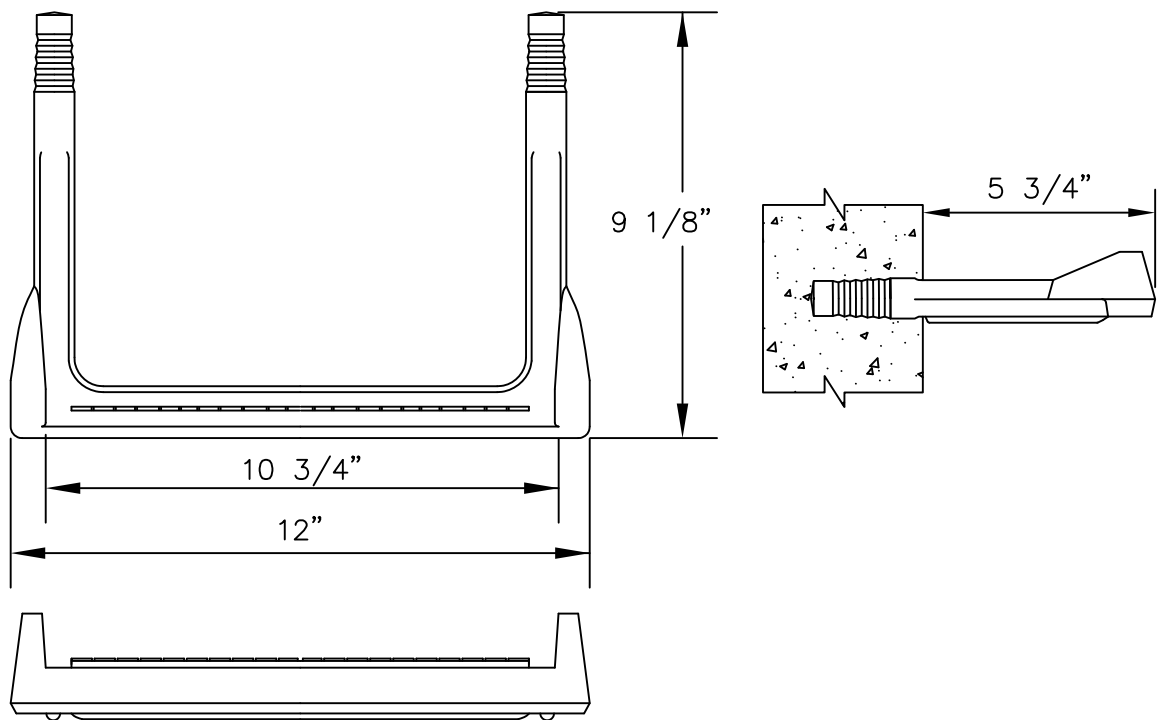
JACKSON COUNTY
UTILITY AUTHORITY

JACKSON COUNTY
UTILITY AUTHORITY
CONSTRUCTION
STANDARDS

MISCELLANEOUS
MANHOLE DETAILS

PAGE NUMBER:

SS-15



STEP DETAIL

N.T.S.



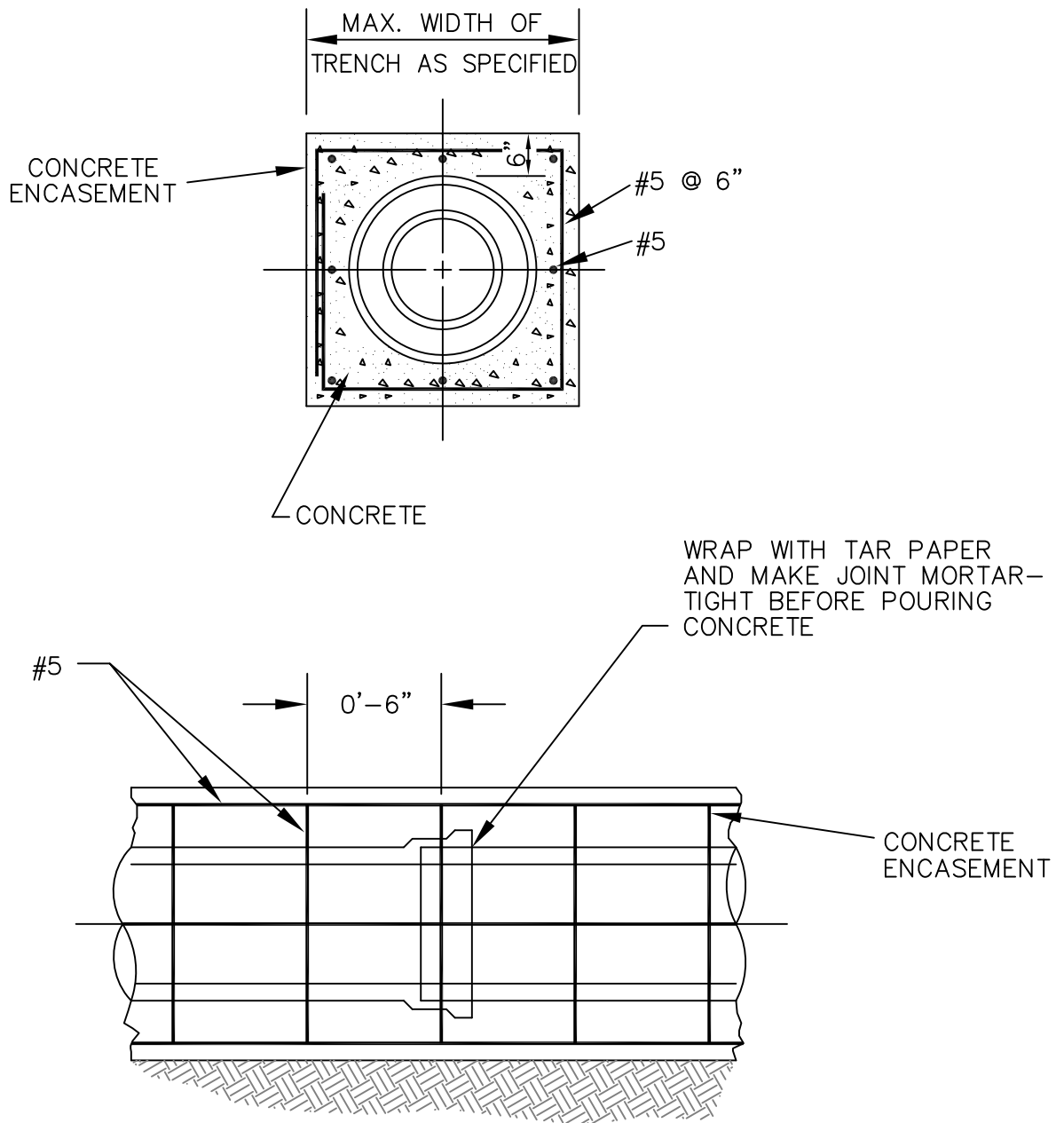
JACKSON COUNTY
UTILITY AUTHORITY

JACKSON COUNTY
UTILITY AUTHORITY
CONSTRUCTION
STANDARDS

MANHOLE STEP
DETAIL

PAGE NUMBER:

SS-16



TYPICAL DETAIL OF CONCRETE ENCASEMENT AND/OR COLLAR

N.T.S.



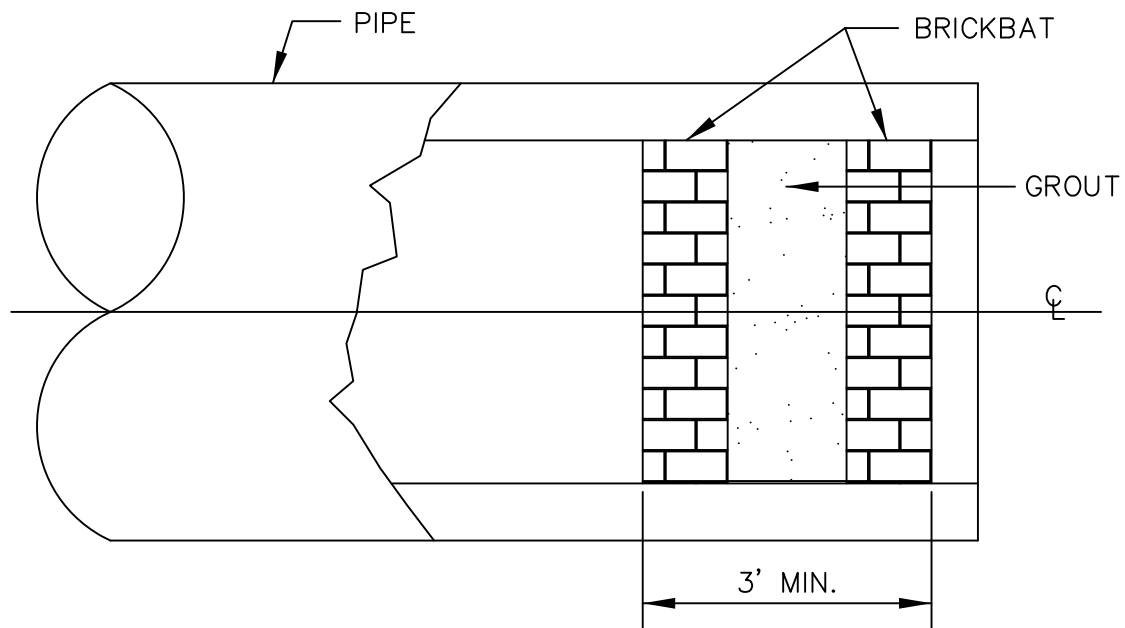
JACKSON COUNTY
UTILITY AUTHORITY

JACKSON COUNTY
UTILITY AUTHORITY
CONSTRUCTION
STANDARDS

TYPICAL DETAIL OF
CONCRETE
ENCASEMENT
AND/OR COLLAR

PAGE NUMBER:

SS-17



DETAIL OF PIPE PLUG

N.T.S.

NOTE:
(DIG AND REMOVE ONE PIPE SECTION PRIOR TO
PLACEMENT OF PIPE PLUG.)



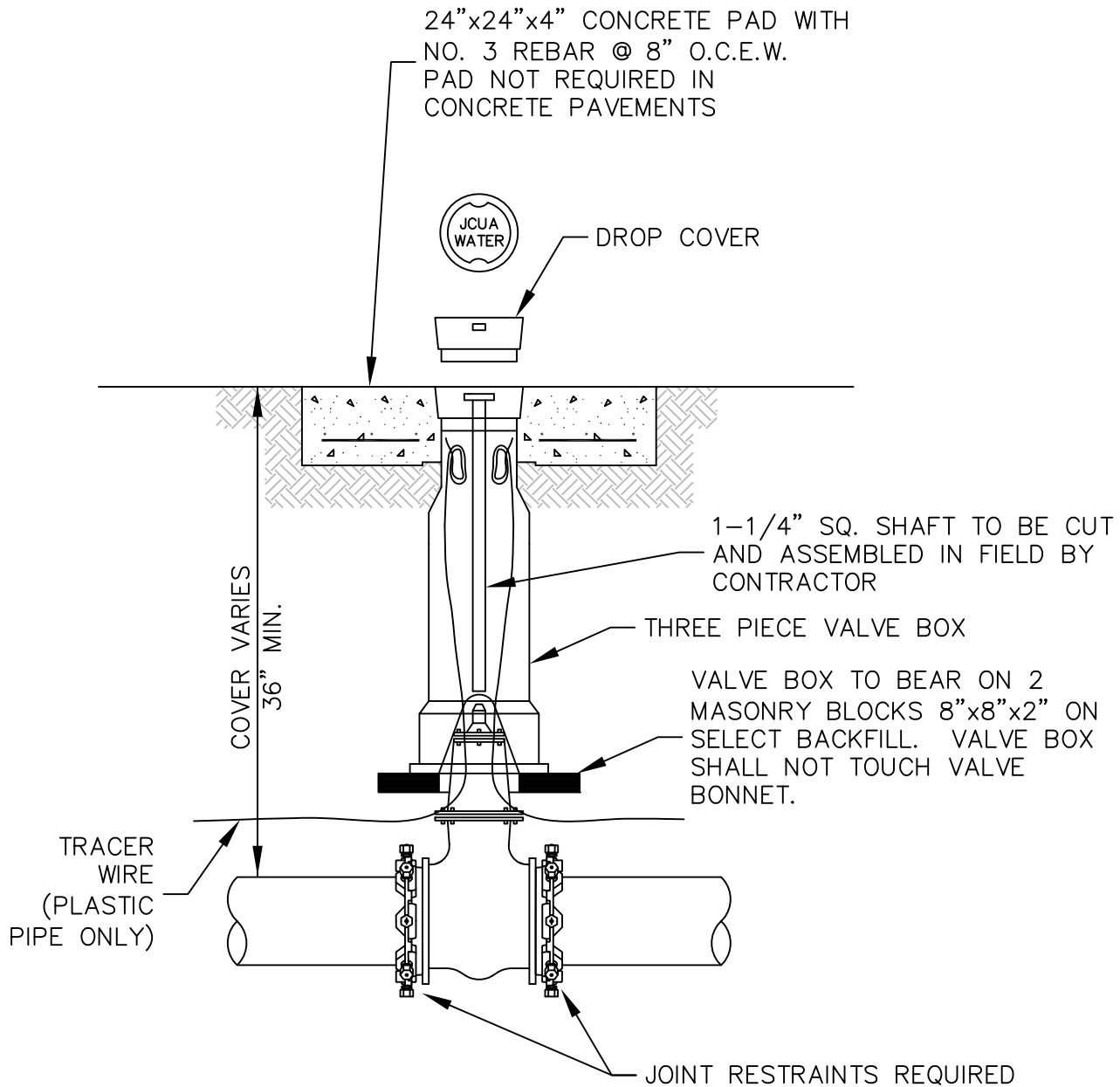
JACKSON COUNTY
UTILITY AUTHORITY

JACKSON COUNTY
UTILITY AUTHORITY
CONSTRUCTION
STANDARDS

DETAIL OF
PIPE PLUG

PAGE NUMBER:

SS-18



TYPICAL GATE VALVE DETAIL

N.T.S.

NOTE:

VALVE BOX SHOULD BE LEVEL AND VALVE STEM SHOULD BE CENTERED OF VALVE BOX.



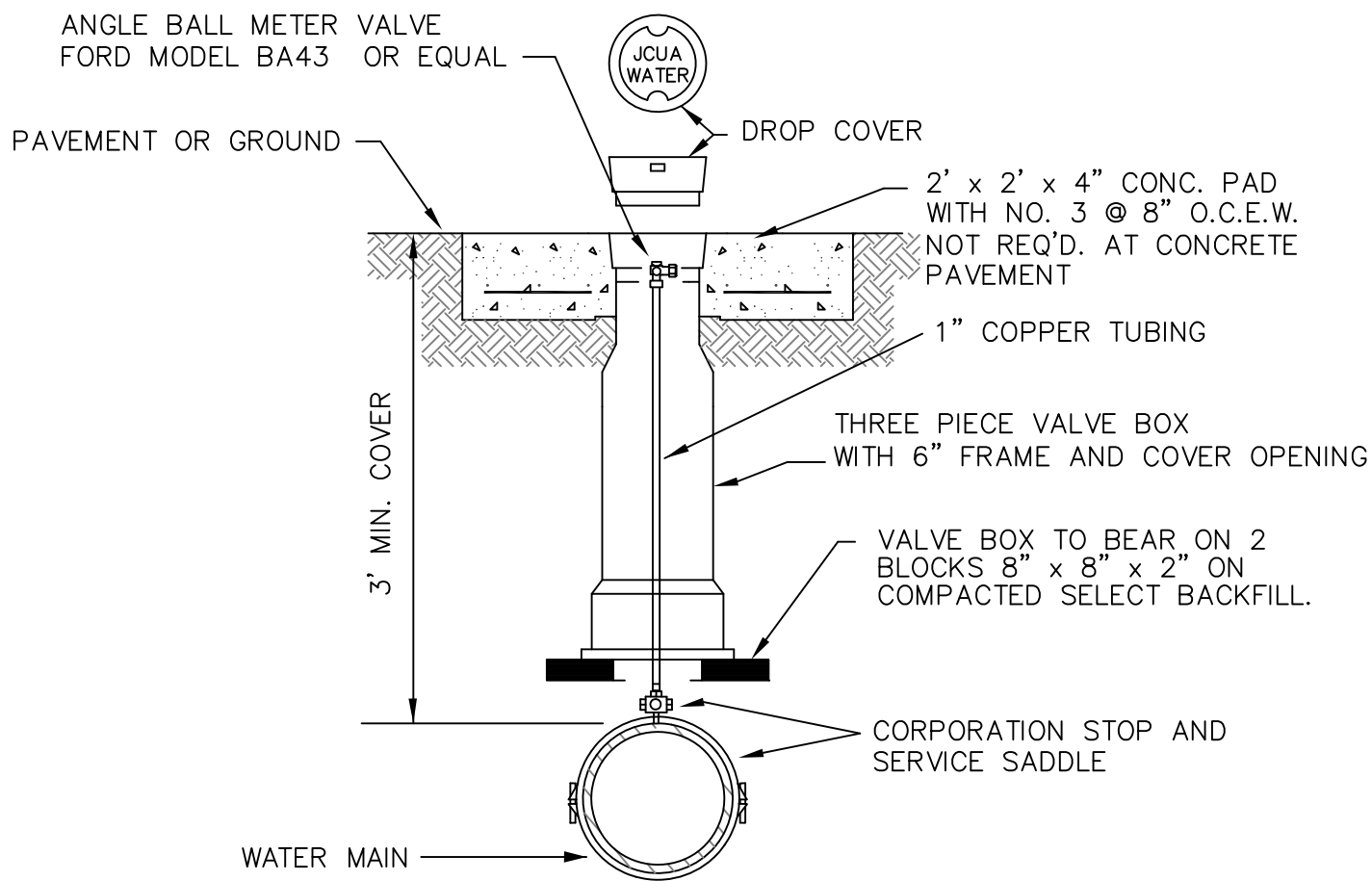
JACKSON COUNTY
UTILITY AUTHORITY

JACKSON COUNTY
UTILITY AUTHORITY
CONSTRUCTION
STANDARDS

TYPICAL GATE
VALVE DETAIL

PAGE NUMBER:

PW-1



AIR RELEASE CORPORATION STOP DETAIL

N.T.S.



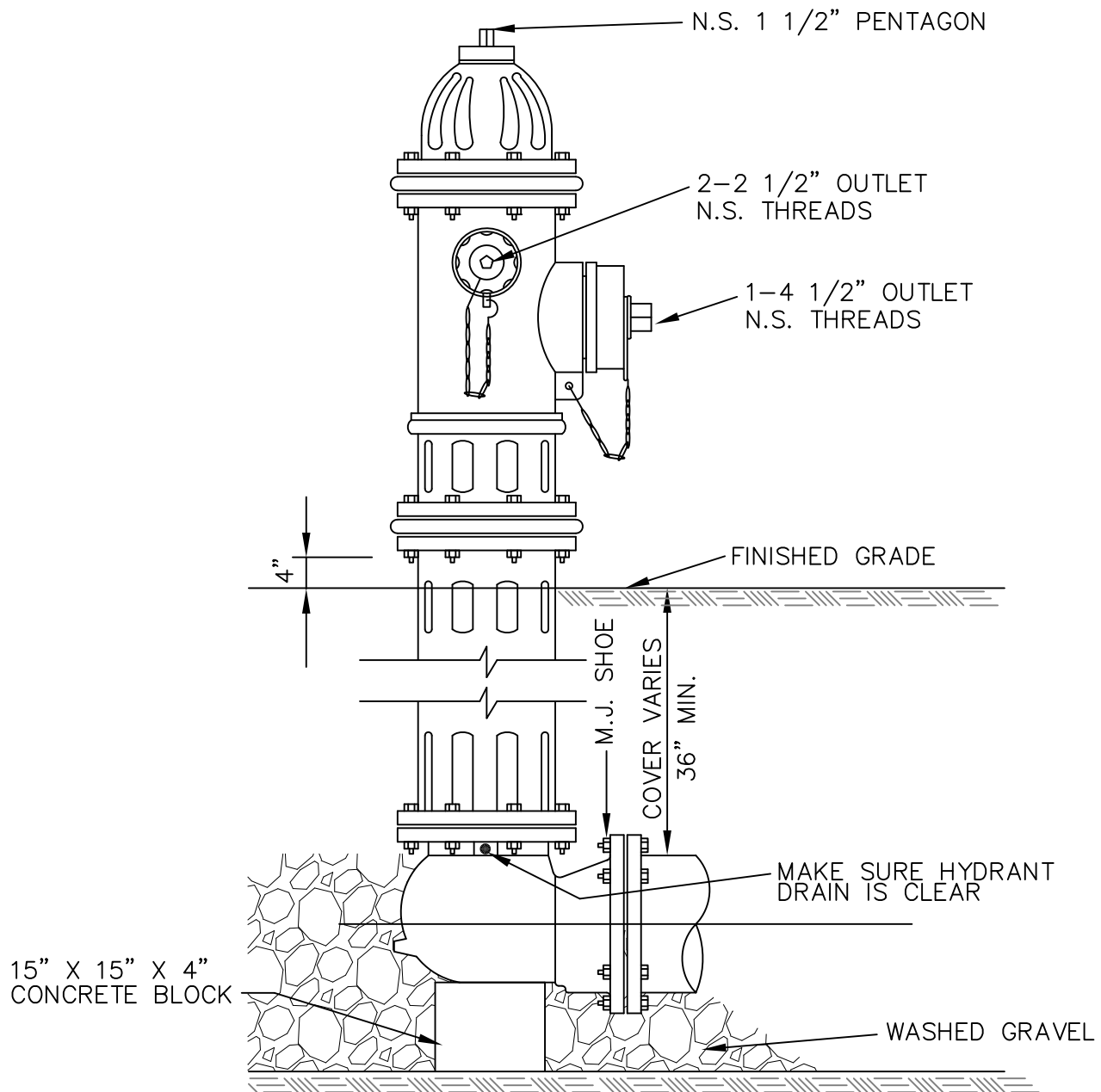
JACKSON COUNTY
UTILITY AUTHORITY

JACKSON COUNTY
UTILITY AUTHORITY
CONSTRUCTION
STANDARDS

AIR RELEASE
CORPORATION
STOP DETAIL

PAGE NUMBER:

PW-2



ELEVATION

TYPICAL FIRE HYDRANT ASSEMBLY

N.T.S.



JACKSON COUNTY
UTILITY AUTHORITY

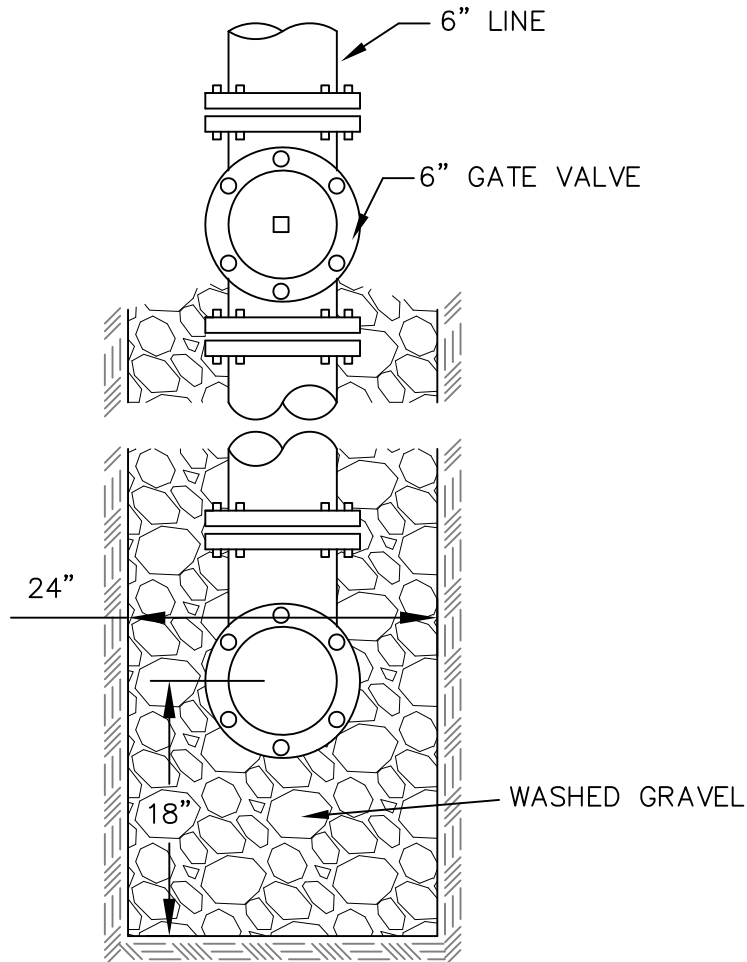
JACKSON COUNTY
UTILITY AUTHORITY
CONSTRUCTION
STANDARDS

TYPICAL FIRE
HYDRANT ASSEMBLY
(ELEVATION)

PAGE NUMBER:

PW-3

CONNECT TO 8" OR LARGER WATER MAIN
HOT TAP WITH TAPPING SLEEVE OR D.I. TEE



PLAN

TYPICAL FIRE HYDRANT ASSEMBLY

N.T.S.

- NOTES: 1. ALL JOINTS OF FIRE ASSEMBLY SHALL BE RESTRAINED.
2. GATE VALVES WILL BE REQUIRED ON ALL FIRE HYDRANT LEGS.
3. FIRE HYDRANT ASSEMBLY IS TO INCLUDE ALL APPURTENANCES INCLUDING THE CONNECTION AT THE MAIN.



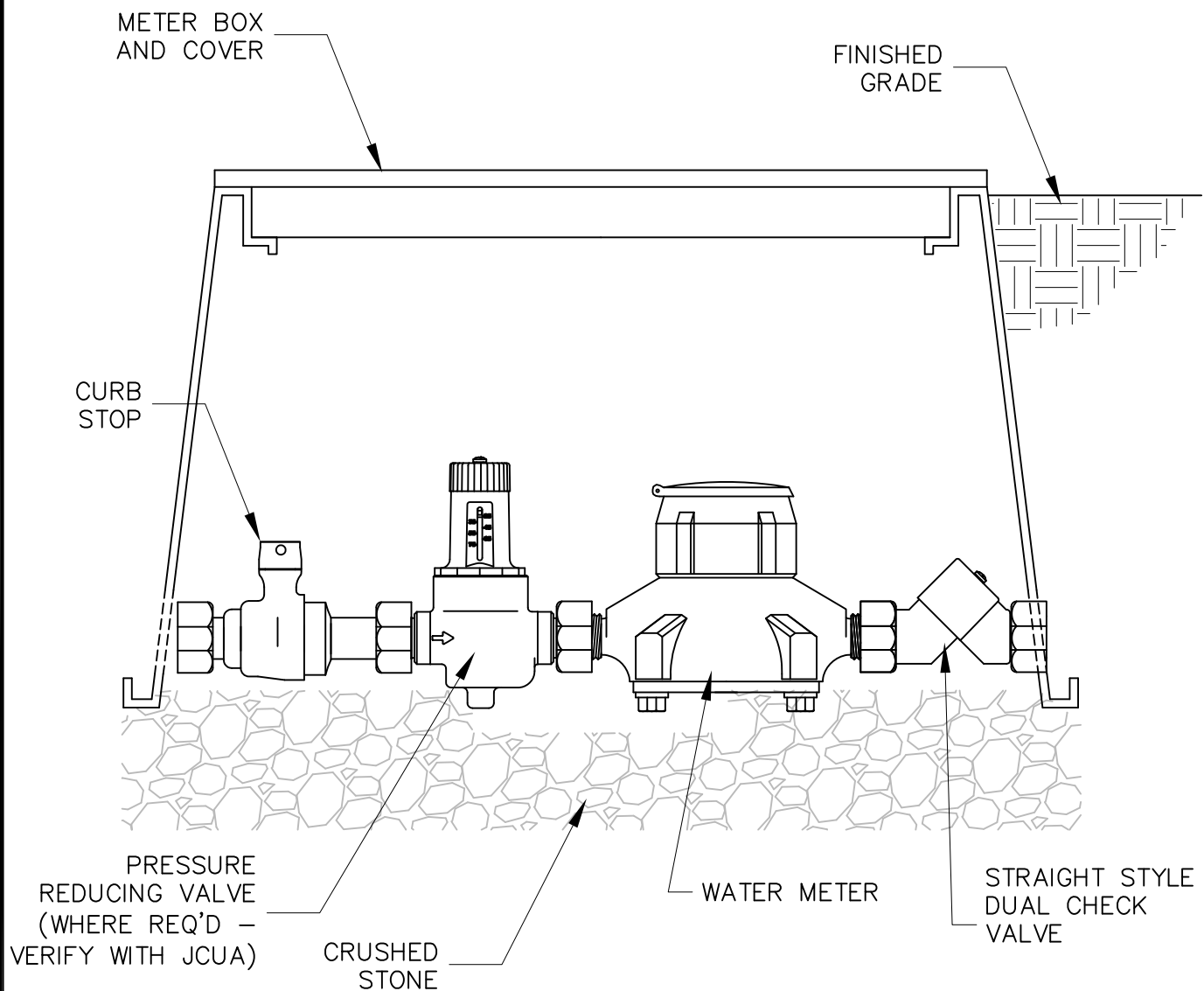
JACKSON COUNTY
UTILITY AUTHORITY

JACKSON COUNTY
UTILITY AUTHORITY
CONSTRUCTION
STANDARDS

TYPICAL FIRE
HYDRANT ASSEMBLY
(PLAN AND NOTES)

PAGE NUMBER:

PW-4



TYPICAL WATER METER DETAIL

N.T.S.



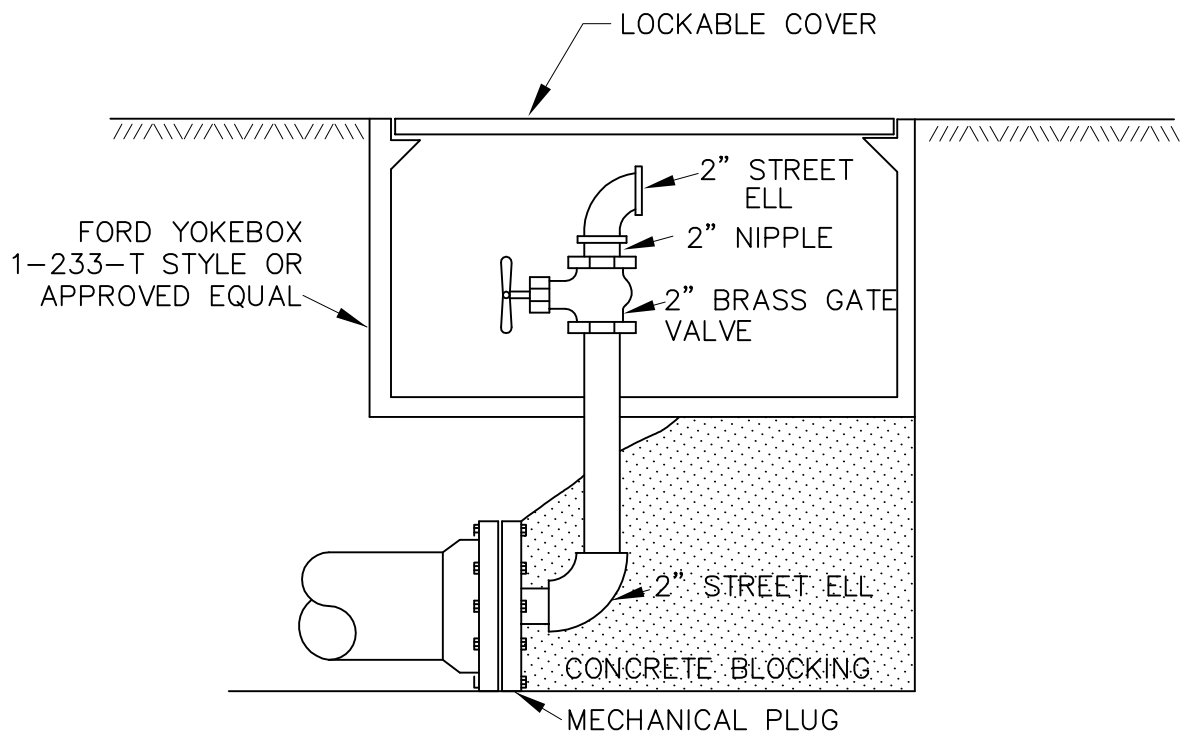
JACKSON COUNTY
UTILITY AUTHORITY

JACKSON COUNTY
UTILITY AUTHORITY
CONSTRUCTION
STANDARDS

TYPICAL WATER
METER DETAIL

PAGE NUMBER:

PW-5



TYPICAL BLOW-OFF ASSEMBLY

N.T.S.

NOTES:

1. ALL MATERIALS FOR CONSTRUCTION OF BLOW-OFF ASSEMBLY SHALL BE STAINLESS STEEL PIPE.



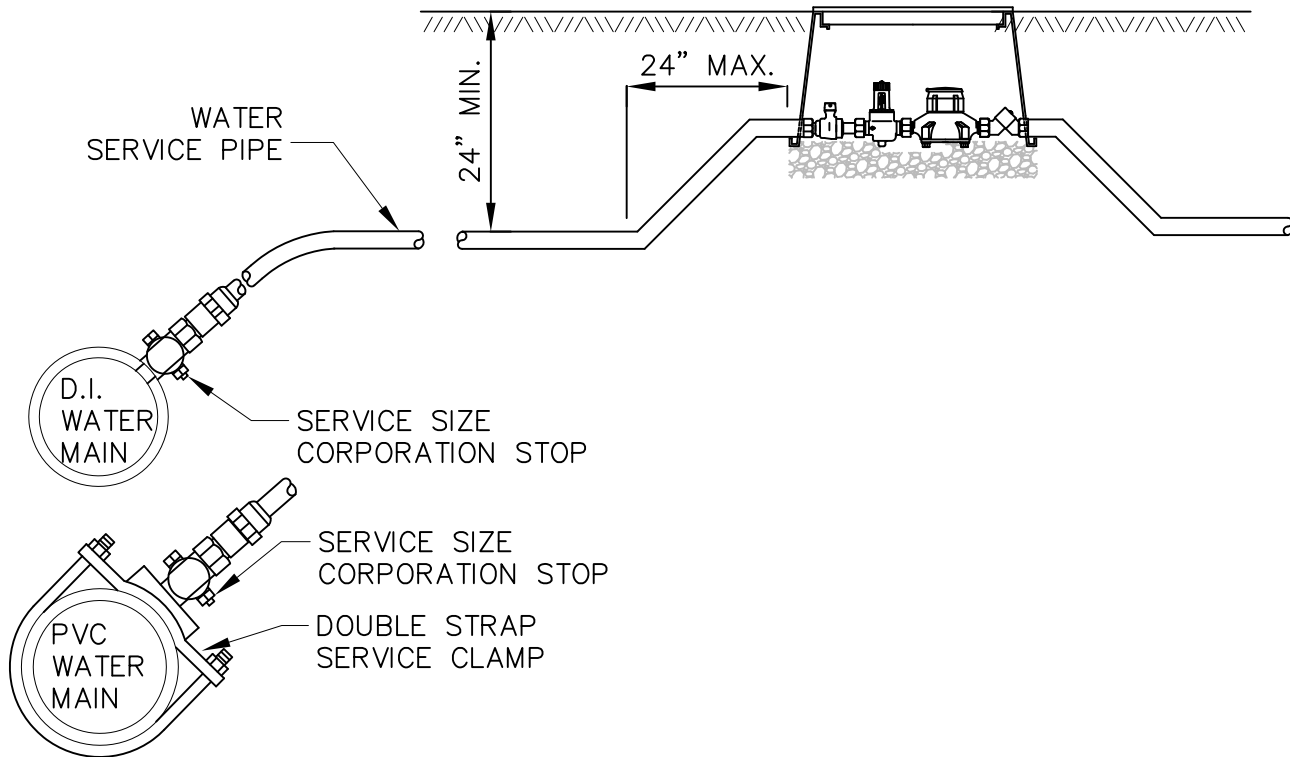
JACKSON COUNTY
UTILITY AUTHORITY

JACKSON COUNTY
UTILITY AUTHORITY
CONSTRUCTION
STANDARDS

TYPICAL BLOW-OFF
ASSEMBLY

PAGE NUMBER:

PW-6



TYPICAL WATER SERVICE CONNECTION TO NEW WATER MAIN

N.T.S.

NOTES:

1. LOCATOR WIRE SHALL BE PLACED ON ALL SERVICE LINES 1½" AND LARGER.



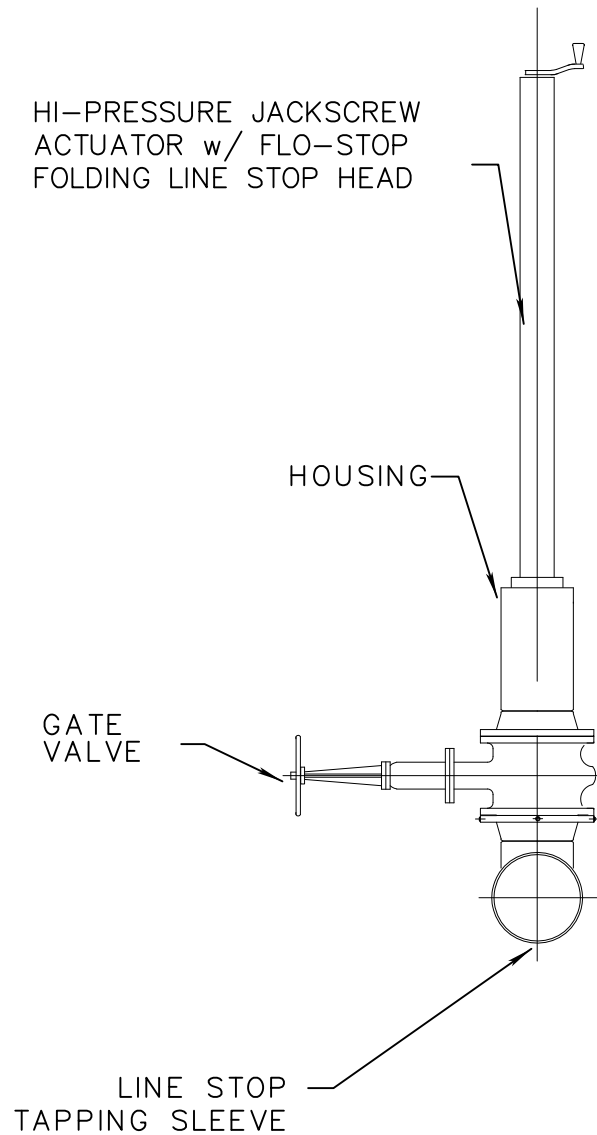
**JACKSON COUNTY
UTILITY AUTHORITY**

**JACKSON COUNTY
UTILITY AUTHORITY
CONSTRUCTION
STANDARDS**

TYPICAL WATER
SERVICE CONNECTION
TO WATER MAIN

PAGE NUMBER:

PW-7



TYPICAL LINE STOP DETAIL

N.T.S.



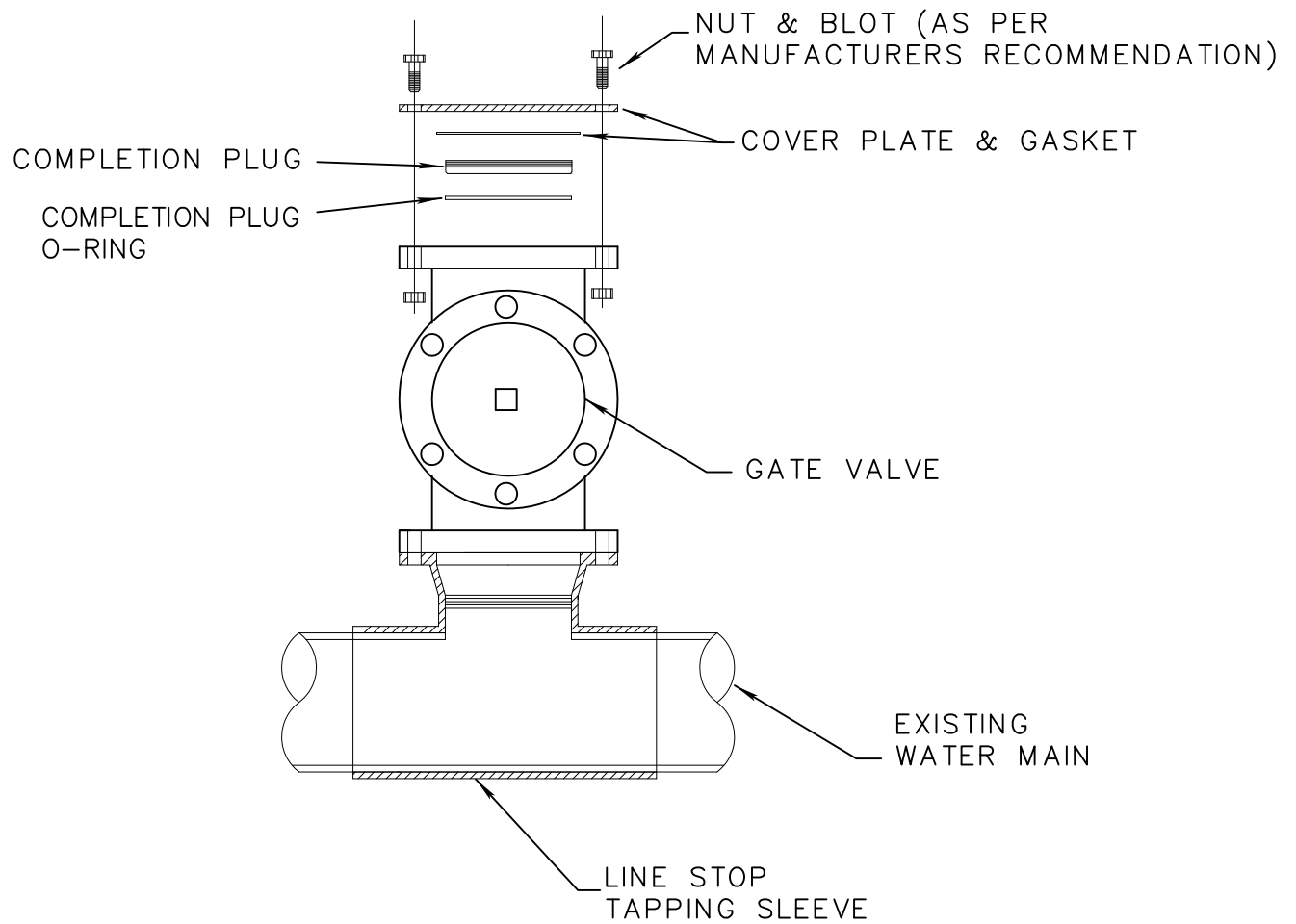
JACKSON COUNTY
UTILITY AUTHORITY

JACKSON COUNTY
UTILITY AUTHORITY
CONSTRUCTION
STANDARDS

TYPICAL LINE
STOP DETAIL

PAGE NUMBER:

PW-8



LINE STOP - COMPLETION PLUG DETAIL

N.T.S.



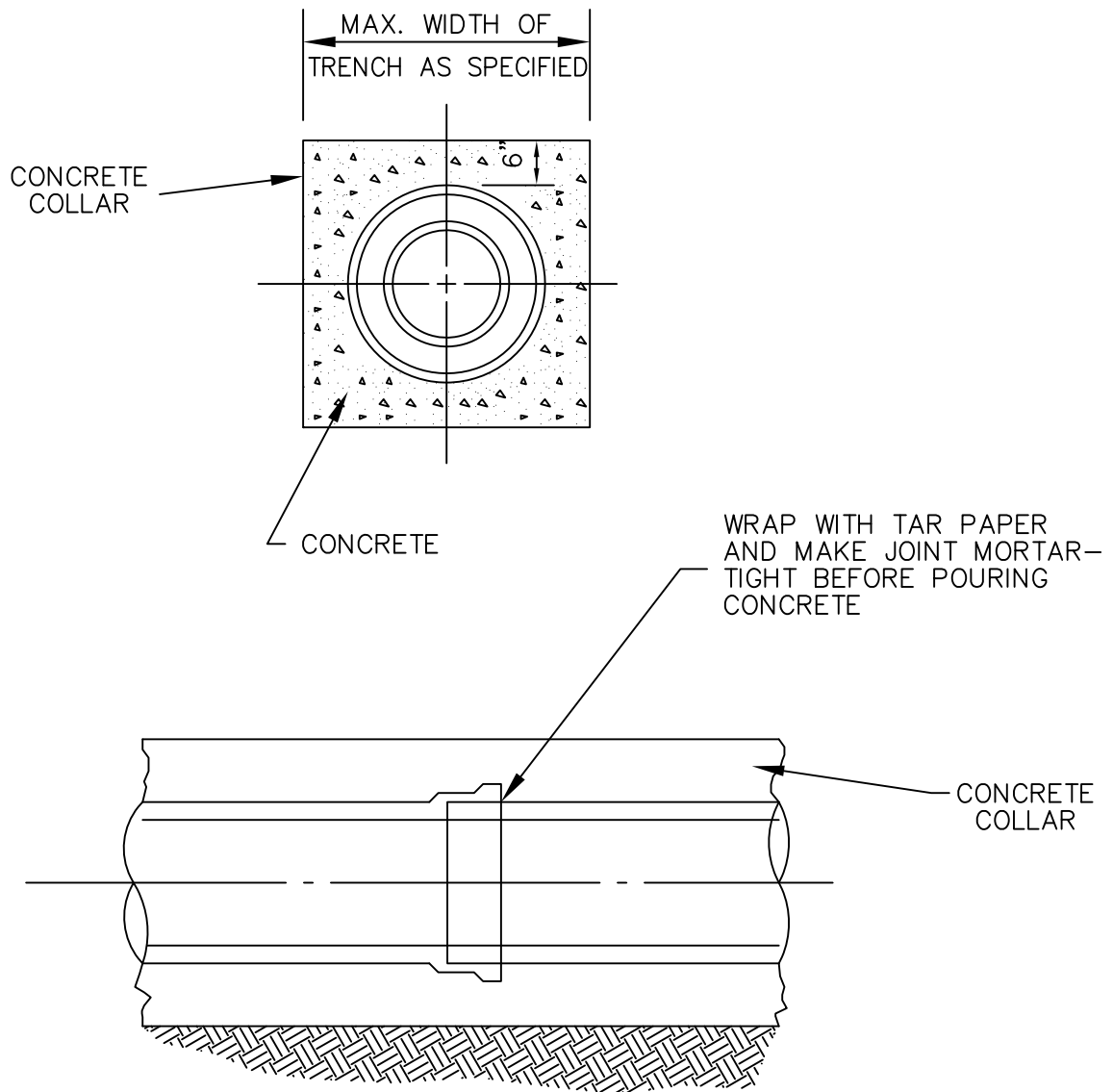
JACKSON COUNTY
UTILITY AUTHORITY

JACKSON COUNTY
UTILITY AUTHORITY
CONSTRUCTION
STANDARDS

LINE STOP
COMPLETION
PLUG DETAIL

PAGE NUMBER:

PW-9



TYPICAL DETAIL OF CONCRETE ENCASEMENT

N.T.S.



JACKSON COUNTY
UTILITY AUTHORITY

JACKSON COUNTY
UTILITY AUTHORITY
CONSTRUCTION
STANDARDS

TYPICAL DETAIL OF
CONCRETE
ENCASEMENT

PAGE NUMBER:

PW-10